



NILE SERAY

AN A&K SANCTUARY



The Nile River, Egypt



The banks of the Nile harbor spectacular archaeological sights

A New Chapter in Nile Cruising

A new riverboat of unparalleled luxury is setting sail in 2026. Nile Seray is the fifth addition to A&K Sanctuary's fleet in Egypt and our most spacious yet. This elegant and spacious vessel redefines river cruising, with just 32 suites – each one a private sanctuary featuring floor-to-ceiling windows, Juliet balconies and large bathrooms. Some suites extend the indulgence, with generous living areas, full private terraces and even an outdoor jacuzzi overlooking the Nile. Sailing between Aswan and Luxor on four-night voyages, Nile Seray offers an immersion into the heart of Ancient Egypt. Guests step back in time on daily excursions led by expert Egyptologists, unlocking the secrets of the Valley of the Kings, the temples of Luxor, Karnak and Aswan, as well as lively bazaars and sleepy Nile islands.

Six Reasons to Choose Nile Seray



- 01
- 02
- 03
- 04
- 05
- 06



Unlock in-depth local knowledge

Daily excursions with expert Egyptologists, unlocking Ancient Egypt’s most iconic sites.



Nile Seray's warm, contemporary interiors

Refined modern design in the 32 spacious suites, with Juliet balconies and large bathrooms, and two with jacuzzis.



Shaded spaces beckon for downtime

Expansive top-deck with swimming pool, daybeds and a chic outdoor lounge.



Light floods in through floor-to-ceiling windows

Two dining areas offer indoor and outdoor dining – and endless Nile views.



Keep up the workout routine in the slick onboard gym

Wellness area with spa treatment rooms and state-of-the-art gym for workouts on the water.



The Funtasia Bike Shop, an AKP project

Every journey supports A&K Philanthropy's initiatives in Egypt.

The Riverboat



Nile Seray is A&K Sanctuary's fifth riverboat in Egypt, ushering in a new era of luxury on the river that has captivated travellers for millennia. Designed for 64 guests, with an exceptional staff-to-guest ratio of 1.5:1, it combines modern sophistication with a deep sense of place. Handcrafted furniture and mashrabiya-inspired details showcase Egyptian artistry, while interiors finished in local marble and quartzite root the vessel in its surroundings. Beyond its elegant suites, Nile Seray has two dining areas offering indoor and outdoor dining, a serene spa and gym, and a spectacular sun deck featuring canopied daybeds, a swimming pool and an outdoor lounge.

Nile Seray is also A&K Sanctuary's most spacious riverboat, continuing a story that began in 1977 when Geoffrey Kent, inspired by a chance meeting with actor David Niven on the set of *Death on the Nile*, first launched A&K Sanctuary's pioneering Nile cruises.

Four decks of sublime design



"Exclusive Insider Access and behind-the-scenes experiences reveal 5,000 years of history."



Nile Seray is A&K Sanctuary's most spacious riverboat

The Riverboat



BAR AND LOUNGE

The bar and lounge is a relaxed yet refined gathering place, where you can enjoy signature cocktails and locally inspired drinks. Unwind after a day exploring ancient sites and share stories over sundowners before dinner, as the water gently laps against your luxury Nile riverboat.

SWIMMING POOL

For downtime in between immersive Egyptian excursions, the sun deck pool invites refreshing swims and leisurely hours beneath shaded cabanas shaped like dahabiya sails.

SPA AND WELLNESS

Aboard Nile Seray, wellness is woven into the rhythm of the voyage. The lower-deck spa, with two serene treatment rooms, is open daily for massages and therapies from morning until night. A fully equipped gym with Technogym machines is available 24 hours a day. For peace of mind, a resident doctor is on hand from early morning until the last guest retires.

EGYPTIAN CRAFT

Built to the highest standards with a focus on local materials and craftsmanship, Nile Seray is both contemporary and deeply rooted in its surroundings. From bespoke handcrafted furniture to mashrabiya-inspired design details, every element reflects Egyptian artistry.



CLOCKWISE FROM LEFT
View ancient temples from the water
Enjoy local flavors in the two dining areas
There are ample corners in which to unwind

The Riverboat



Even the gym has Nile views

Natural materials are showcased

River	The Nile River
Length	75m
Number of Rooms	32
Maximum Number of Guests	64
Child Policy	Children aged 10 years and above are welcome. Children under 15 must share with an adult
Guide Accommodation	Yes
Wheelchair Accessible	Limited Access
WiFi Available	Yes, in all areas
Credit cards Accepted	Visa, MasterCard, and Amex
Currencies Accepted	USD, Pound, Euro and Egyptian Pound
Swimming Pool	Yes
Spa/Treatment Room	Yes
Gym	Yes
Elevator	Yes

The Suites



Nile Seray's 32 suites pair sweeping views of the Nile with interiors that balance elegance and comfort. Floor-to-ceiling windows flood the spaces with natural light, while Juliet balconies allow guests to feel the river breeze as they sail. The design palette is warm and contemporary, with wood and rattan finishes, textured fabrics and calming neutral tones that echo the riverbanks beyond. King-size beds (convertible to twins), Egyptian cotton linens and deluxe bathrooms ensure every suite is a sanctuary. Of the four suite classes, the Royal Suite offers the ultimate indulgence — a full private balcony with its own jacuzzi overlooking the Nile.

The Egyptian sun illuminates every room

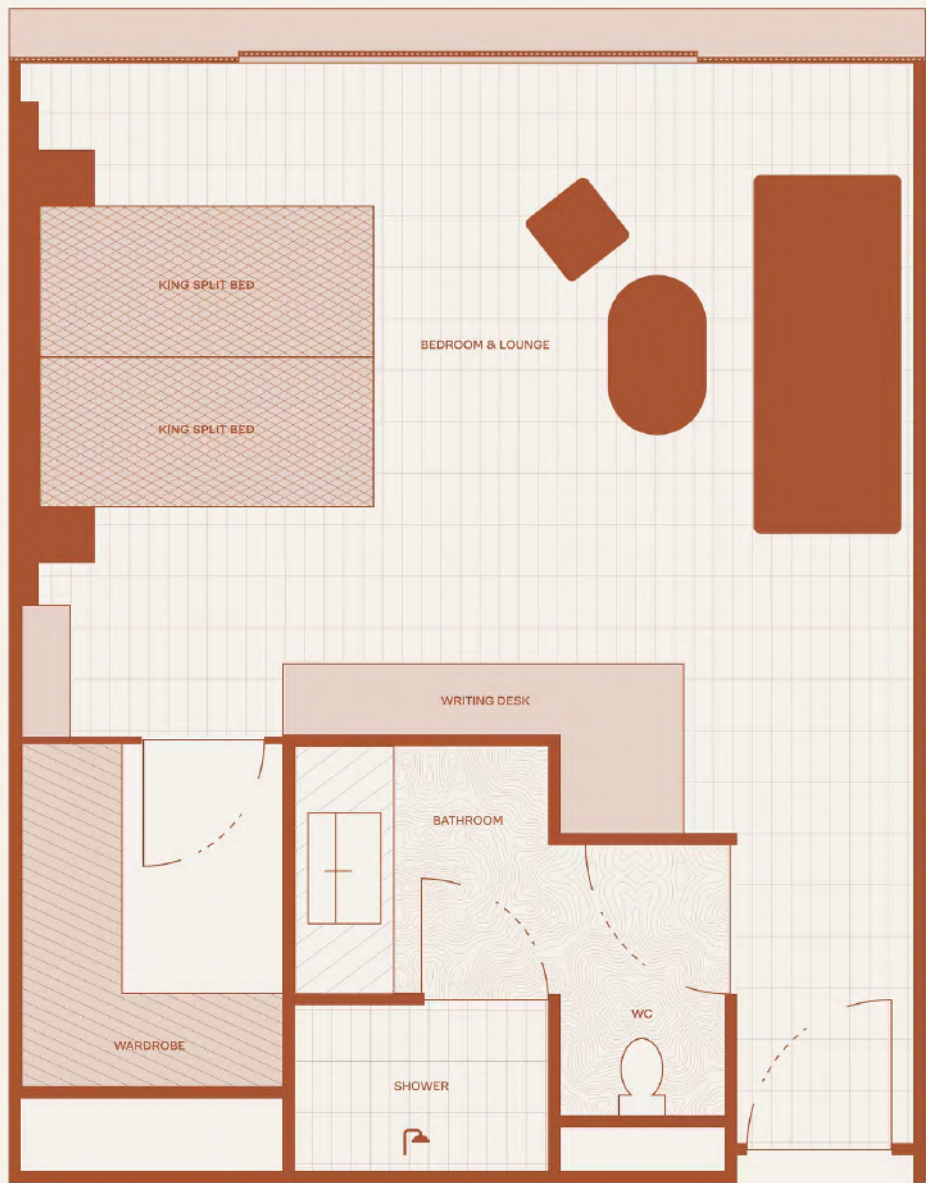


"The pared-back design and earthy tones put a modern twist on the palette of the age-old Nile riverscape."



Each suite is a calming, floating cocoon

The Signature Suites

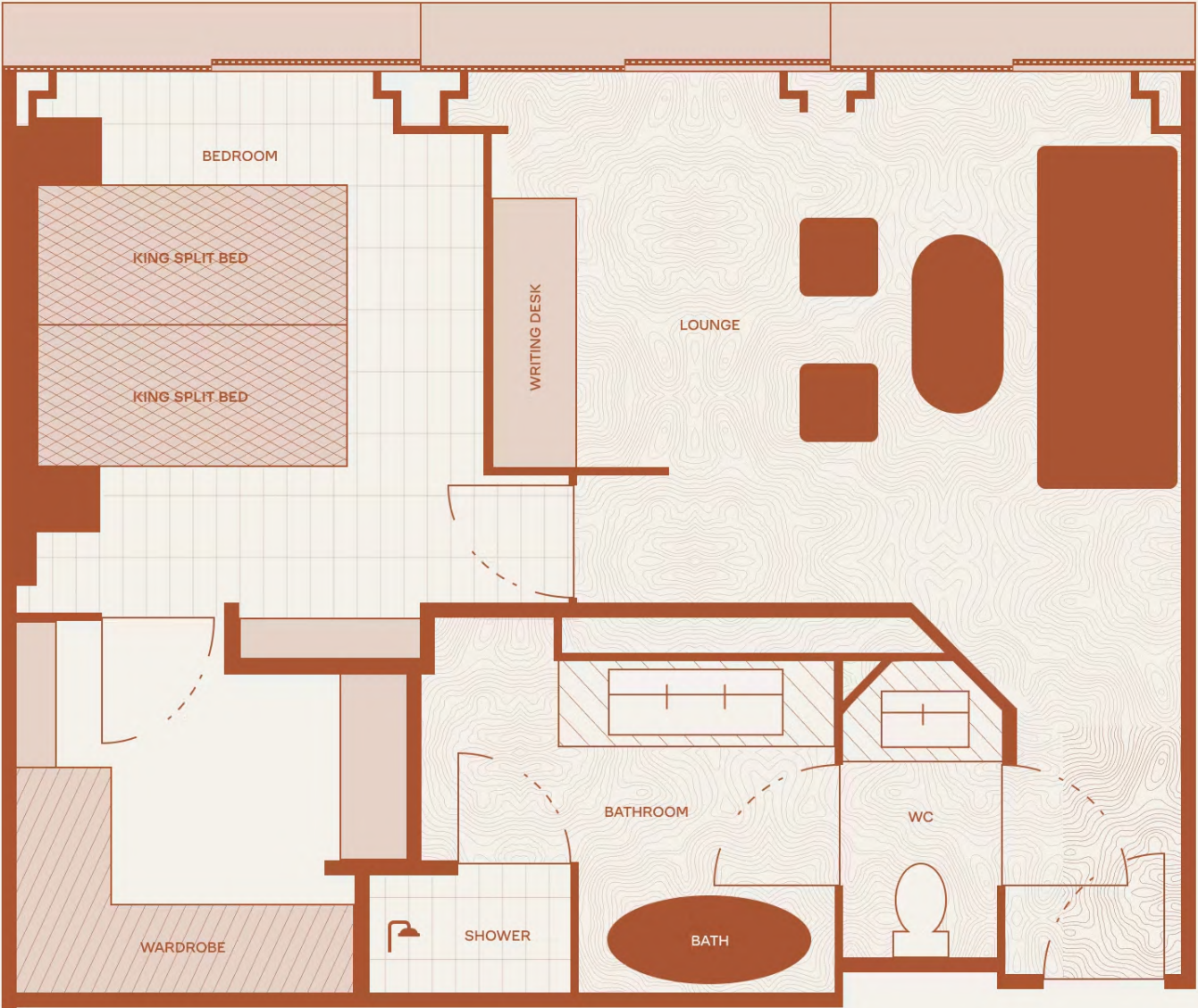


SIGNATURE SUITE | SLEEPS 2 | 33 SQ M (355 SQ FT)

With a soothing palette of soft neutrals, cane-fronted cabinetry and subtle ambient lighting, the Signature Suite feels refined yet inviting. The Juliet balcony opens up sweeping Nile views, while a premium bed and cozy sitting area create an atmosphere perfect for relaxation. The modern bathroom, with walk-in shower and sleek stone finishes, enhances the atmosphere of understated luxury.

Room Size	33 sq m (355 sq ft)
Bed Configuration (King or Twin)	All rooms can be converted to a king or twins
Triple Rooms Available	Yes subject to availability; third guest must be 12 or under
Mini Bar	Yes
Tea and Coffee Station	Yes
Air Conditioning	Yes
Overhead Fan	No
Plug Type	Type G Plug, USB and USB Type C
Bath	No
Shower	Yes
Hairdryer	Yes
Balcony	Yes; Juliet balcony

The Prestige Suites



PRESTIGE SUITE | SLEEPS 2 | 49 SQ M (527 SQ FT)

Designed for extra space and comfort, the Prestige Suite features a generous seating area, floor-to-ceiling windows and a Juliet balcony that brings the riverscape into the room. Natural textures and contemporary furnishings lend a calm, airy character. The bathroom — with double sinks, a walk-in shower, and a deep bathtub — invites long, indulgent moments of rest.

Room Size	49 sq m (527 sq ft)
Bed Configuration (King or Twin)	All rooms can be converted to a king or twins
Triple Rooms Available	Yes subject to availability; third guest must be 12 or under
Mini Bar	Yes
Tea and Coffee Station	Yes
Air Conditioning	Yes
Overhead Fan	No
Plug Type	Type G Plug, USB and USB Type C
Bath	Yes
Shower	Yes
Hairdryer	Yes
Balcony	Yes; Juliet balcony

The Presidential Suites



Room Size	53 sq m (570 sq ft)
Bed Configuration (King or Twin)	All rooms can be converted to a king or twins
Triple Rooms Available	Yes subject to availability; third guest must be 12 or under
Mini Bar	Yes
Tea and Coffee Station	Yes
Air Conditioning	Yes
Overhead Fan	No
Plug Type	Type G Plug, USB and USB Type C
Bath	Yes
Shower	Yes
Hairdryer	Yes
Balcony	Yes; Juliet balcony



PRESIDENTIAL SUITE | SLEEPS 2 | 53 SQ M (570 SQ FT)

Expansive and light-filled, the Presidential Suite combines elegant wood detailing with soft, tactile fabrics to create a sophisticated retreat. A spacious seating area, Juliet balcony and panoramic windows keep the Nile ever-present, while the ensuite bathroom offers spa-like indulgence with double basins, a walk-in shower and a freestanding bathtub.

The Royal Suites



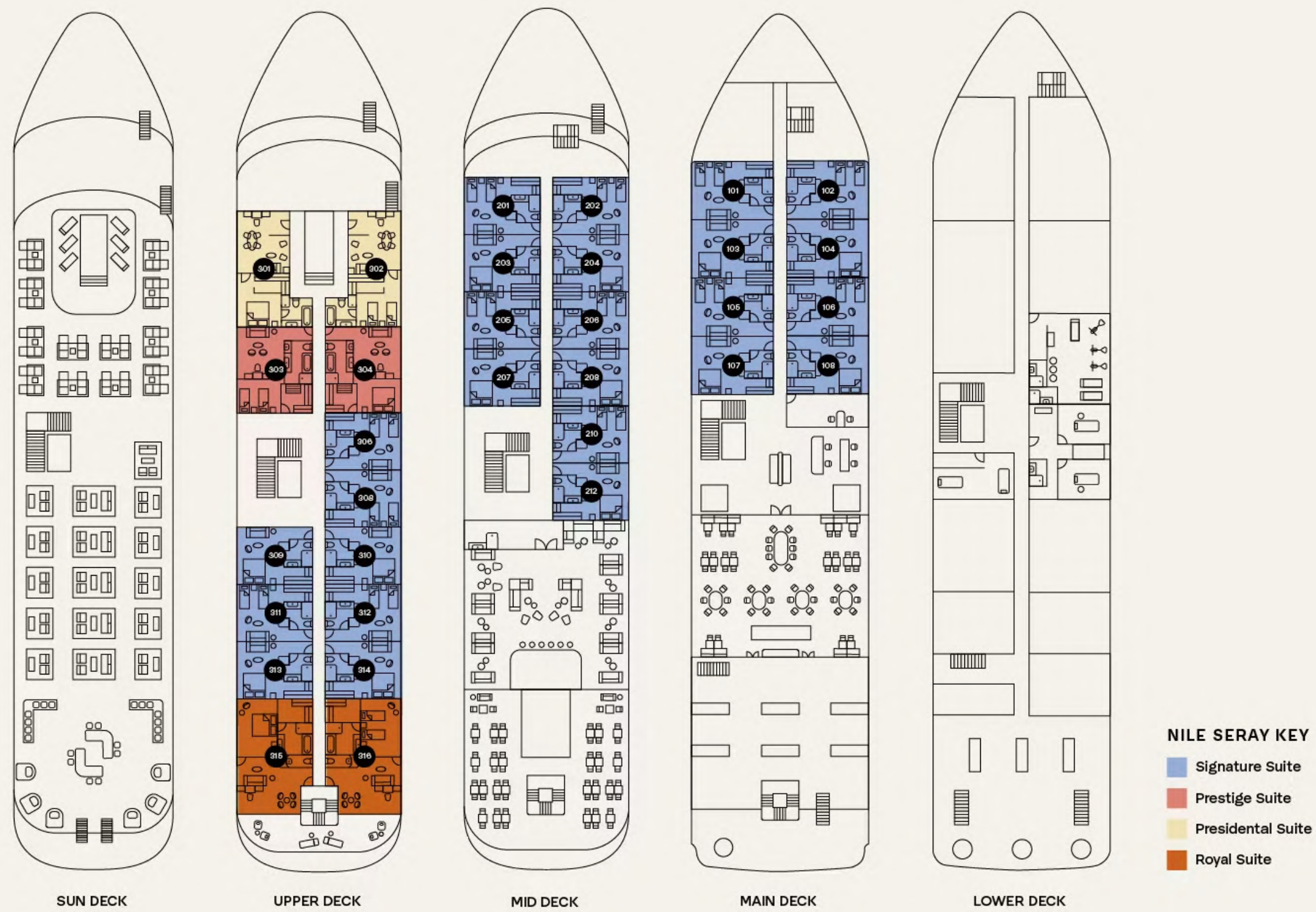
Room Size	66 sq m (710 sq ft)
Bed Configuration (King or Twin)	All rooms can be converted to a king or twins
Triple Rooms Available	Yes subject to availability; third guest must be 12 or under
Mini Bar	Yes
Tea and Coffee Station	Yes
Air Conditioning	Yes
Overhead Fan	No
Plug Type	Type G Plug, USB and USB Type C
Bath	Yes
Shower	Yes
Hairdryer	Yes
Balcony	Yes; with private jacuzzi



ROYAL SUITE | SLEEPS 2 | 66 SQ M (710 SQ FT)

The Royal Suite blends natural woods, woven textures and modern design in a light-filled open-plan layout with a dedicated dining and living area. Outside, a generous balcony sets the stage for treasured memories with its private jacuzzi and uninterrupted Nile views. The bathroom continues the sense of luxury with its double sinks, rainfall shower, and marble-lined bathtub.

Deck Plan





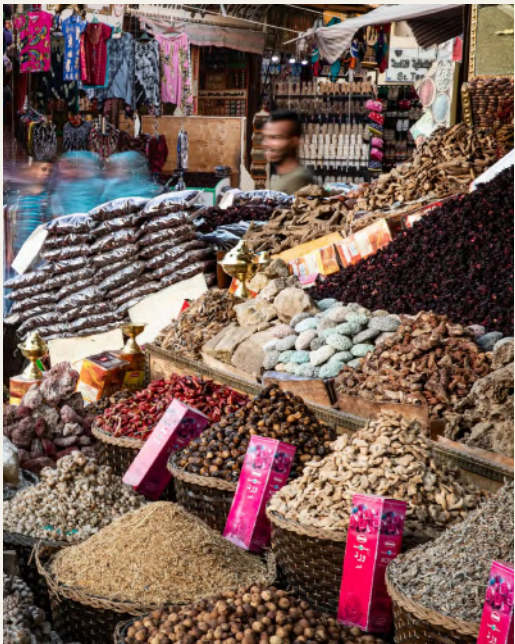
Food & Drink



Dining aboard Nile Seray is relaxed yet refined, with menus blending Egyptian, Middle Eastern and continental cuisine. Guests enjoy mealtimes shaped around daily excursions, whether savoring breakfast indoors, outdoor lunches on deck or elegant dinners under the stars. An attentive poolside bar service completes the experience.

- A buffet breakfast is served on board before guests set out on excursions.
- Head back to Nile Seray for a leisurely lunch, cooled by pleasant river breezes, after morning activities.
- Afternoon tea in the lounge is when guests unwind and regroup, enjoying a refreshing tea service and snacks.
- In the evening, a gourmet dinner, or an Egyptian buffet dinner is followed by music and dancing.

Egyptian spices enhance the authentic cuisine



Lunches on deck are cooled by river breezes

The Nile Location



Welcome to Southern Egypt, crucible of Ancient Egyptian culture. The River Nile wends its way more than 4,000 miles from Lake Victoria to the Mediterranean Sea. Yet it is the 130-mile section between Aswan and Luxor in southern Egypt that exerts the most powerful hold on the collective imagination. Here are many of the largest, most elaborate and intriguing structures built in ancient times, including the massive Temple of Karnak, the Valley of the Kings, the Valley of the Queens, the Temple of Kom Ombo, the Temple of Horus in Edfu, and the Greco-Egyptian shrine to Isis at the Philae temple complex, painstakingly reconstructed on an island after the original site was threatened by floods.

The river and landscape themselves possess an elemental beauty and, with A&K Sanctuary, your journey along and through them will be exclusive and enlightening. Arriving in either Luxor (a one-hour flight from Cairo) or Aswan (1 hour 30 minutes), relax during a private transfer by road (30 or 45 minutes respectively) to the exclusive docking area where you step aboard Nile Seray. Stopping at key archaeological sites en route from Luxor to Aswan — or vice versa — you will step ashore with an Egyptologist guide who will bring to life 5,000 years of history in the living outdoor museum that is the River Nile.

Nile Seray excursions uncover an ancient world



The Nile is the lifeblood of southern Egypt

Getting There



Traditional feluccas are a romantic sight



Cairo Airport to Luxor Airport / Cairo Airport to Aswan Airport

1-hour flight / 1-hour 30-minute flight



Luxor Airport to private dock / Aswan Airport to private dock

30-minute drive / 45-minute drive

Experiences



Whether travelling upstream from Aswan to Luxor or downstream from Luxor to Aswan, twice-daily excursions to must-see sites in the company of an expert guide will help guests get their dynasties in order. With A&K Sanctuary, time in the Valley of the Kings and Queens includes privileged Insider Access to notable tombs — stepping past the velvet rope to unlock hidden treasures — as well as a behind-the-scenes visit to archaeologist Howard Carter's house.



Hot-air balloons deliver a bird's-eye view

LUXOR

Home to more than half of Egypt's antiquities, Luxor — formerly Thebes, the capital of Ancient Egypt at the height of its glory — is the gateway to the Nile or the end point of the voyage. Visit the bustling market before touring its legendary archaeological sites.



Atmospheric ancient ruins abound in Luxor

LUXOR TEMPLE

Luxor honors “kingship”, rather than any deity. Alexander the Great claimed to have been crowned in the city, and he, Amenhotep III, Tutankhamun and Ramesses II built sections of the temple. Nearby were a legionary fortress and a seat of government in Roman times.



Explore UNESCO-protected sites with a local guide

KARNAK TEMPLE

This vast complex of temples, pylons, chapels and other structures, including the Great Hypostyle Hall, was built between the Middle Kingdom and Ptolemaic periods. Some 30 pharaohs added works and structures to what is now a UNESCO World Heritage Site.



Intricate hieroglyphics adorn a tomb

THE VALLEY OF THE KINGS

This historic burial ground for nobles and pharaohs, including Tutankhamun, is one of the world's key archaeological sites. Hidden within rocky cliffs, 63 decorated tombs showcase exquisite hieroglyphics, paintings and treasures, proof of royal belief in the afterlife.

Experiences



Whether travelling upstream from Aswan to Luxor or downstream from Luxor to Aswan, twice-daily excursions to must-see sites in the company of an expert guide will help guests get their dynasties in order. With A&K Sanctuary, time in the Valley of the Kings and Queens includes privileged Insider Access to notable tombs — stepping past the velvet rope to unlock hidden treasures — as well as a behind-the-scenes visit to archaeologist Howard Carter's house.



Aswan marks ancient Egypt's southern frontier

ASWAN

The gateway to southern Egypt since 2,000BC, Aswan still delivers astonishing finds. In recent years, archaeologists have uncovered a bust of the Roman Emperor Marcus Aurelius, a sphinx and 35 mummies in a tomb dating back to the Ptolemaic Dynasty.



This shrine to the goddess Isis was saved from rising waters

PHILAE TEMPLE

This ravishingly beautiful Greco-Egyptian shrine to Isis, extraordinary in its own right, was made even more famous when, in 1971, it was relocated from its original site to higher ground on nearby Agilika Island when rising Nile waters threatened to submerge it.



Many ancient ruins are remarkably well preserved

KOM OMBO TEMPLE

Kom Ombo is remarkable for many reasons, not least its dramatic position, symmetrical design and dedication to two gods rather than one — crocodile-headed Sobek and falcon-headed Horus. The mummified reptiles in the Crocodile Museum are surprisingly moving.



Some stone inscriptions are 2,000 years old

TEMPLE OF EDFU

One of the best-preserved shrines in the whole of Egypt, the Temple of Edfu was built between 237 and 57 BC. Inscriptions on the walls give intriguing information about the myths, language and religions following the death of Alexander the Great in 323 BC.

Experiences



Whether travelling upstream from Aswan to Luxor or downstream from Luxor to Aswan, twice-daily excursions to must-see sites in the company of an expert guide will help guests get their dynasties in order. With A&K Sanctuary, time in the Valley of the Kings and Queens includes privileged Insider Access to notable tombs — stepping past the velvet rope to unlock hidden treasures — as well as a behind-the-scenes visit to archaeologist Howard Carter's house.



Traditional feluccas are known for their lateen sails

SAILING A FELUCCA

An outing aboard one of these gracious traditional sailboats, nonchalantly piloted by a skipper with a bare foot on the tiller, is the most serene way to explore the waters around Elephantine Island, Lord Kitchener's Botanical Gardens, and the Agha Khan Mausoleum.



Visit locals in their colorful Nubian homes

NUBIAN VILLAGE

Venture further south along the Nile to Sohail Island, in what was once Nubia — the region where the Kerma civilization, one of the oldest in Africa, flourished from 2500 BC to 1500 BC. Explore a time-warped village where Nubian culture is preserved, taking a camel ride through its alleys and meeting villagers in their colorfully painted homes. Optional experience. Additional cost.



The spice market is the place to pick up gifts to take home

ASWAN SPICE MARKET

As soon as you enter the souk, the powerful aroma of Egyptian herbs and spices engulfs you. Browse the stalls, with their colorful displays, and immerse yourself in the traditional way of life as you wander. Optional experience. Additional cost.



From the water to the air: an alternative view of the Nile

HOT-AIR BALLOON RIDE

You get a fresh perspective on the spectacular Valleys of the Kings and Queens as you soar above them in a hot-air balloon for a memorable, once-in-a-lifetime experience. Optional experience. Additional cost.

Your Nile Seray Four–Night Itinerary



ASWAN TO LUXOR

DAY 1: ASWAN – EMBARKATION

Arrival and embarkation: At a private dock in this southern Egyptian city, step aboard your five-star riverboat, Nile Seray, to the sound of drums and flutes as you are greeted by a traditional Zaffa musical procession.

Lunch and felucca sailing trip: After lunch, board a traditional felucca for a sail around Elephantine Island, continuing to Lord Kitchener’s Botanical Gardens and the hilltop Agha Khan Mausoleum.

Afternoon tea and gourmet dinner: Returning to your riverboat, take afternoon tea in the lounge to the accompaniment of an oud trio, playing the lute-like stringed instrument of that name. Relax onboard until the evening, when you join your Boat Manager and fellow guests for Egyptian wine or beer — the prelude to a gourmet dinner prepared by talented chefs.

DAY 2: EXPLORE TEMPLES OF PHILAE AND KOM OMBO

Morning excursion: After a buffet breakfast, take a short trip by motorboat to Agilika Island, set in the reservoir created by the Old Aswan Dam. Explore its monumental structures before visiting the Granite Quarries that supplied most of the stone used to build pyramids, temples and obelisks.

Cruise to Kom Ombo: Back on board, luxuriate in a leisurely lunch and afternoon tea as you cruise to Kom Ombo. That evening, visit the magnificent Temple of Kom Ombo, dedicated to the crocodile god Sobek. The day ends with a memorable dinner onboard, followed by a movie night — setting you up for the drama of Edfu Temple and Luxor the next day.



Serene sailing in a felucca

Days offer fascinating excursions



Your Nile Seray Four-Night Itinerary



ASWAN TO LUXOR

DAY 3: DISCOVER EDFU AND CULTURAL IMMERSION

Morning excursion: In the morning, your floating home cruises to Edfu, a city on the west bank of the Nile, where you disembark for a morning visit to the dramatic Temple of Edfu.

Afternoon cookery class: Returning to the boat, relax over lunch as you sail to the city of Luxor. If you wish, join a cookery class introducing you to Egyptian ingredients and dishes, followed by afternoon tea.

Evening entertainment: Explore the Temple of Luxor with your Egyptologist guide and learn about the god Amun, to whom it is dedicated. In the evening, enter into the spirit of local life with an Egyptian Night on board your riverboat, featuring a lavish buffet dinner followed by music and dancing.

DAY 4: THE VALLEY OF THE KINGS EXPLORATION

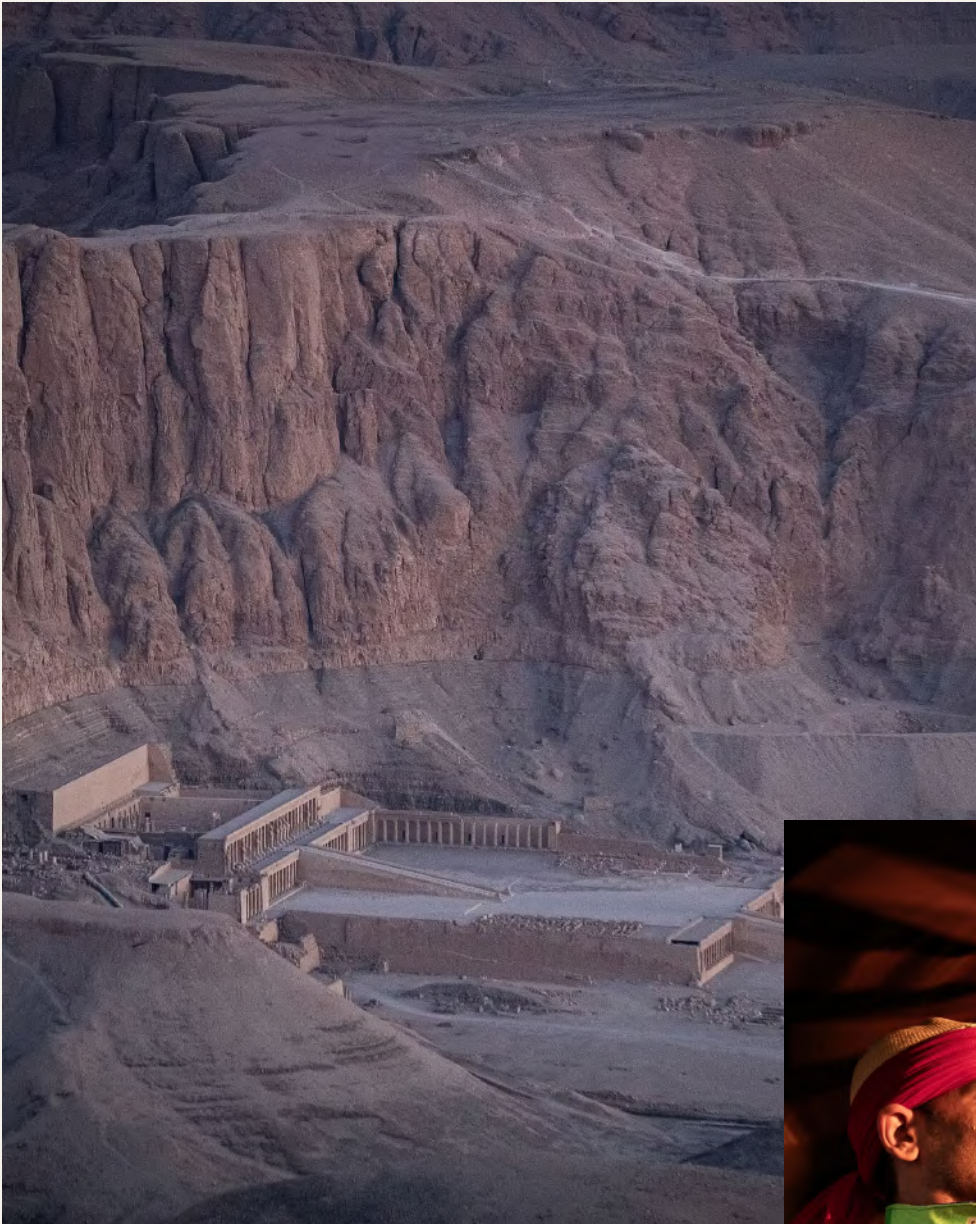
Morning excursion: After breakfast, visit the archaeological showstopper of the Temple of Karnak, a complex of temples, pylons and chapels which you explore with your Egyptologist guide.

Afternoon excursion: Explore the Valley of the Kings where, for nearly 500 years, some 65 rock-cut tombs and chambers were excavated for nobles and pharaohs including Tutankhamun. Visit the following tombs with insider access: Seti I and Ramses VI. In the early evening, visit the tomb of King Tutankhamun during a private opening, after the West Bank closes. Explore the tomb of Amenhotep III with your Egyptologist guide during a private opening.

Farewell gala dinner: Back on the boat, your voyage concludes with a gala dinner complete with white-gloved waiters serving gourmet cuisine, plus a dervish show.

DAY 5: YOUR NILE ADVENTURE ENDS

After an early breakfast, check out at 8am and prepare for your flight home.



A trip to Egypt is impossibly romantic
Nile Seray offers guests an authentic experience

Your Nile Seray Four-Night Itinerary



LUXOR TO ASWAN



Welcome to an archaeological odyssey
Enjoy unique vantage points from the river



DAY 1: LUXOR – EMBARKATION

Arrival and embarkation: At a private dock in Luxor, step aboard your five-star riverboat, Nile Seray, to the sound of drums and flutes as you are greeted by a Zaffa musical procession, based on a wedding march that predates Islam.

Lunch and West Bank excursion: After lunch onboard, explore the West Bank of the Nile with your Egyptologist guide. The Valley of the Kings is where, for nearly 500 years, some 65 rock-cut tombs and chambers were excavated for nobles and pharaohs. With A&K Sanctuary, you explore the burial sites of Seti I and Ramses VI. In the early evening, visit the tomb of King Tutankhamun during a private opening, after the West Bank closes. Explore the tomb of Amenhotep III with your Egyptologist guide during a private opening.

Gourmet dinner: Returning to your riverboat, take afternoon tea in the lounge to the accompaniment of an oud trio, playing the lute-like stringed instrument of that name. Relax onboard until the evening, when you join your Boat Manager and fellow guests for Egyptian wine or beer — the prelude to a gourmet dinner prepared by talented chefs.

DAY 2: EAST BANK EXPLORATION

Morning excursion: Your archaeological odyssey continues with the East Bank of the Nile. Highlights include the Temple of Luxor, built from Nubian sandstone, and the Temple of Karnak - not a single building but a vast complex of temples, pylons, chapels and other structures developed over several centuries.

Cruise to Esna: Back on board, luxuriate in a leisurely lunch as your riverboat cruises to Esna — a city on the West Bank of the Nile, about 30 miles south of Luxor. Afternoon tea in the lounge beckons, and the day ends with a delicious dinner followed by a movie night — setting you up for the drama of exploring the Temples of Edfu and Kom Ombo the next day.

Your Nile Seray Four-Night Itinerary



LUXOR TO ASWAN



Feluccas harnessing wind power
Explore Egypt's unique culture



DAY 3: DISCOVER KOM OMBO AND CULTURAL IMMERSION

Morning excursion: In the morning, your floating home cruises to Edfu, a city on the west bank of the Nile, where you disembark for a morning visit to the dramatic Temple of Edfu.

Afternoon cookery class: Returning to the boat, relax over lunch as you sail to Kom Ombo. If you wish, join a cookery class introducing you to Egyptian ingredients and dishes, followed by afternoon tea.

Evening entertainment: In the early evening visit the magnificent Temple of Kom Ombo, dedicated to the crocodile god Sobek. Returning to the boat, enter into the spirit of local life with an Egyptian Night on board your riverboat, featuring a lavish buffet dinner followed by music and dancing.

DAY 4: EXPLORE ANCIENT SITES BY MOTORBOAT AND FELUCCA

Morning excursion: After breakfast and your arrival in Aswan, a short trip by motorboat takes you to Agilika Island, set in the reservoir created by the Old Aswan Dam. Explore the island's monumental structures, before visiting the Granite Quarries that supplied most of the hard stone used by the Ancient Egyptians to build pyramids, temples and obelisks.

Afternoon felucca sailing trip: After lunch on your riverboat, board a traditional felucca for a sail around Elephantine Island, continuing to Lord Kitchener's Botanical Gardens and the hilltop Agha Khan Mausoleum.

Farewell gala dinner: Returning to the boat, take afternoon tea to the accompaniment of an oud trio, playing the lute-like instrument of that name. That evening, your voyage concludes with a gala dinner complete with white-gloved waiters serving gourmet cuisine, plus a dervish show.

DAY 5: YOUR NILE ADVENTURE ENDS

After an early breakfast, check out at 8am and prepare for your flight home.

The Details



HONEYMOONS, ANNIVERSARIES & SPECIAL OCCASIONS

A journey aboard Nile Seray is effortlessly romantic. Couples can enjoy private balcony dinners (for guests staying in the Royal Suites), sunset felucca sails, or spa treatments for two, while the crew adds thoughtful touches — from rose-petal turndowns to celebratory cakes — to mark life’s milestones in unforgettable style.

FAMILIES WITH CHILDREN

Nile Seray welcomes children aged 10 years and up. Children aged 15 and younger are required to share a cabin with at least one adult.

INCLUSIONS

- All meals, mineral water, tea and coffee during meals, juices during breakfast, and afternoon tea
- Guided excursions as detailed in the itinerary, including transport and entrance fees, port charges and fees

EXCLUSIONS

- All alcoholic and non-alcoholic drinks, except water, tea and coffee during mealtimes
- International and domestic flights, and transfers
- Travel insurance, laundry, boutique purchases, spa treatments, gratuities and all other items of a personal nature



Special experiences can be arranged for honeymooners



Felucca trips are a slower way to get around

Travel Tips



WHAT TO PACK

Guests should pack cool and comfortable clothing. Jerseys and heavier jackets are needed for spring and winter, light t-shirts and shorts can be worn during summer. Sturdy and comfortable shoes are essential. Accessories to pack include: camera, sunglasses and sun hat.

The dress code on board is casual during the day, and smart casual for evening meals. Shorts and t-shirts are not permitted at dinner.

HEALTH

Please discuss health precautions for your travel itinerary with a qualified health professional at least six weeks before departure.

MONEY & CREDIT CARDS

All extras can be paid for with Visa, MasterCard, American Express and traveller's cheques. US dollars, British pounds, Euros and Egyptian Pounds are also accepted; however, change will be given in the local currency.

GRATUITY GUIDELINES

Tipping and gratuities remain entirely at your discretion.

All aboard for a sunset sailing





The Bike Shop at Funtasia Cultural Center is supported by A&K Philanthropy

JOURNEYS WITH PURPOSE IN EGYPT

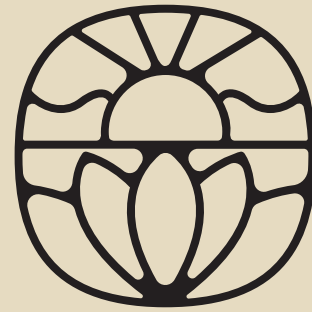
A&K founder Geoffrey Kent pioneered the community-first approach to conservation more than 60 years ago. Today, through A&K Philanthropy (AKP), we support over 55 active projects in 24 countries, harnessing travel as a force for good. Guests cruising aboard Nile Seray may visit our partner initiatives in Egypt, seeing firsthand how meaningful investment in local communities can create lasting change.

FUNTASIA CHILDREN'S SCHOOL, LUXOR

In the heart of Luxor, AKP supports the Funtasia Cultural Center, an afterschool program that nurtures creativity, confidence, and opportunity for underprivileged children. Here, around 50 students aged 4–15 engage in workshops on pottery, painting, gardening, theatre, and wellbeing, learning practical and artistic skills that prepare them for brighter futures. Guests visiting Funtasia can join activities, meet children, and explore initiatives such as the Bike Shop and seasonal garden. Since its founding in 2014, the program has empowered over 250 children and 100 women, transforming lives on Luxor’s West Bank.

MAGDI YACoub HEART CENTRE, ASWAN

Founded in 2009 by world-renowned heart surgeon Sir Magdi Yacoub, the Aswan Heart Centre provides free, life-saving cardiovascular care to Egypt’s most vulnerable patients. Supported by AKP, the center employs more than 370 doctors and nurses, combining advanced surgical facilities with pioneering research. Guests may take a guided behind-the-scenes tour, gaining insight into surgical theatres, family care programs, and cutting-edge imaging technology. With cardiovascular disease responsible for nearly half of Egypt’s deaths, the center’s impact is profound — offering hope, healing, and a brighter future to countless children and families.



A&K SANCTUARY