

ORIENT EXPRESS

# CORINTHIAN

MEDITERRANEAN 2026





**MEDITERRANEAN 2026**



140 years after the launch of its first luxury trains, the legendary Orient Express embarks on an extraordinary new journey with the unveiling of the world’s largest sailing yacht for Orient Express Sailing Yachts: the Corinthian. A groundbreaking achievement in maritime history, this incredible venture redefines the boundaries of travel and luxury.

With only 54 luxuriously appointed suites, the refined elegance and service of the Orient Express, and all-inclusive voyages to the Mediterranean’s yachting playgrounds, set sail on a voyage of discovery that promises unforgettable memories.

4	CORINTHIAN SPIRIT
15	YOUR JOURNEY
22	ONBOARD EXPERIENCE
54	SUITES
90	ITINERARIES
98	PROGRAM ASHORE
108	DECK PLANS
112	ORIENT EXPRESS TRAINS & HOTELS



CORINTHIAN SPIRIT

# A JOURNEY TO ELSEWHERE





# TECHNOLOGICAL MARVEL

BY VIANNEY VAUTIER, NAVAL ARCHITECT & CHIEF OPERATING OFFICER

THE CORINTHIAN IS A TRIUMPH OF MODERN NAVAL DESIGN. CREATED BY NAVAL ARCHITECT VIANNEY VAUTIER, THIS VESSEL STANDS AS A BEACON OF WHAT’S POSSIBLE WHEN TECHNOLOGY AND ARTISTRY COME TOGETHER. ITS SAIL-POWERED JOURNEY OFFERS BOTH ELEGANCE AND SUSTAINABILITY, ENSURING AN EXPERIENCE THAT IS AS FORWARD-THINKING AS IT IS TIMELESS.

**REINVENTING THE ART OF SAILING**

Redefining an entire generation of sailing vessels is no small feat, especially when large merchant sailing ships began vanishing from the seas over a century ago. With the dominance of motor yachts, the science and romance of wind-powered travel seemed almost forgotten.

The development of the Orient Express Sailing Yachts project brought a unique set of challenges, as today’s safety, crew, and efficiency standards are vastly different from those of traditional sailing ships. Even hull designs have transformed—from the sleek, streamlined forms designed for trade wind routes to bulkier shapes built for heavy cargo.

Designing a 1,500-square-meter (16,145-square-feet) sail posed another formidable task; most sailmakers abandoned the idea due to the immense forces involved. Yet, the engineers at Chantiers de l’Atlantique embraced the challenge, creating a patented sail using carbon fiber-reinforced glass panels instead of standard woven cloth. The entire rigging is fully automated, ensuring optimal performance with minimal crew input.

This innovative sail plan, paired with powerful hull lines, gives Corinthian its unmistakable silhouette and remarkable performance on the open sea.

**STABILITY WITHOUT COMPROMISE**

Unlike most sailboats that tilt under the force of the wind, the Corinthian remains steady and level. This may seem counterintuitive, but the yacht’s stability comes from a calculated balance of weight and width. With a 25.2-meter (82.7-feet) beam and a weight exceeding 16,000 metric tons (17,637 tons), the Corinthian is built to sail smoothly without heeling.

**ELECTRIC PROPULSION FOR MAXIMUM EFFICIENCY**

To optimize efficiency, the Corinthian is fitted with electric propulsion motors and variable pitch propellers with full feathering capabilities. This sophisticated system continuously adjusts the propeller pitch and RPM to match the prevailing wind conditions, ensuring maximum efficiency.

**ECO-CONSCIOUS FOCUS**

The Corinthian also incorporates state-of-the-art technologies to minimize its environmental footprint, from advanced engine emissions controls to onboard waste treatment systems.

Fresh water is generated onboard, reducing the need for excess storage weight. After use, wastewater undergoes advanced treatment to ensure no pollutants enter the ocean. An innovative sensor system, equipped with high-resolution cameras and AI, detects marine life beneath the surface to prevent accidental encounters with wildlife.

The world largest Sailing Yacht - Corinthian





# FRENCH LINE HERITAGE

Inspired by the legacy of the Orient Express, the Corinthian brings the storied elegance of French craftsmanship into a new era of maritime luxury. From its bespoke interiors to its meticulously curated cultural experiences, each voyage reflects a harmonious blend of artistry and exploration. This is more than a journey; it is a celebration of diverse cultures seen from an unmatched vantage point, where timeless heritage meets modern sophistication. Every detail is imbued with the spirit of discovery, offering guests a seamless connection to the past and present of French excellence.

The Corinthian is a testament to the unparalleled dedication of the Orient Express brand to evoke a sense of wonder and refinement. Its architecture and design mirror the elegance of classic French aesthetics while incorporating modern conveniences and technology. Guests aboard the yacht can revel in a luxurious environment where each corner reveals a thoughtfully crafted story, ensuring an unforgettable travel experience steeped in cultural and historical significance.



The SS Normandie, iconic French cruise liner



(Left to right)  
1. The original Orient-Express train  
2. Life aboard the historical Orient Express train  
3. Dining hall of the SS Normandie  
© Collection French Lines & Compagnies







La Bibliothèque

The Orient Express spirit lives in every detail aboard the Corinthian. Each space is a sanctuary of beauty, thoughtfully designed to inspire awe and spark imagination. From the graceful symmetry of its interiors to the luxurious textures that reflect French Art Deco traditions, the yacht evokes an atmosphere of timeless grandeur. As Creative Director, I envisioned a vessel where the boundaries of design and functionality dissolve, creating an environment where guests can truly immerse themselves in an experience as elegant as it is unforgettable. Every element of the Corinthian is a tribute to craftsmanship and artistry, combining intricate detailing with innovative architecture. Guests will find themselves surrounded by an ambiance that seamlessly blends classic elegance with modern ingenuity. The result is a floating palace that serves as both a celebration of the Orient Express legacy and a gateway to unmatched luxury and sophistication at sea.

# ORIENT EXPRESS SPIRIT

BY MAXIME D'ANGEAC, CREATIVE DIRECTOR & ARCHITECT



The Lobby

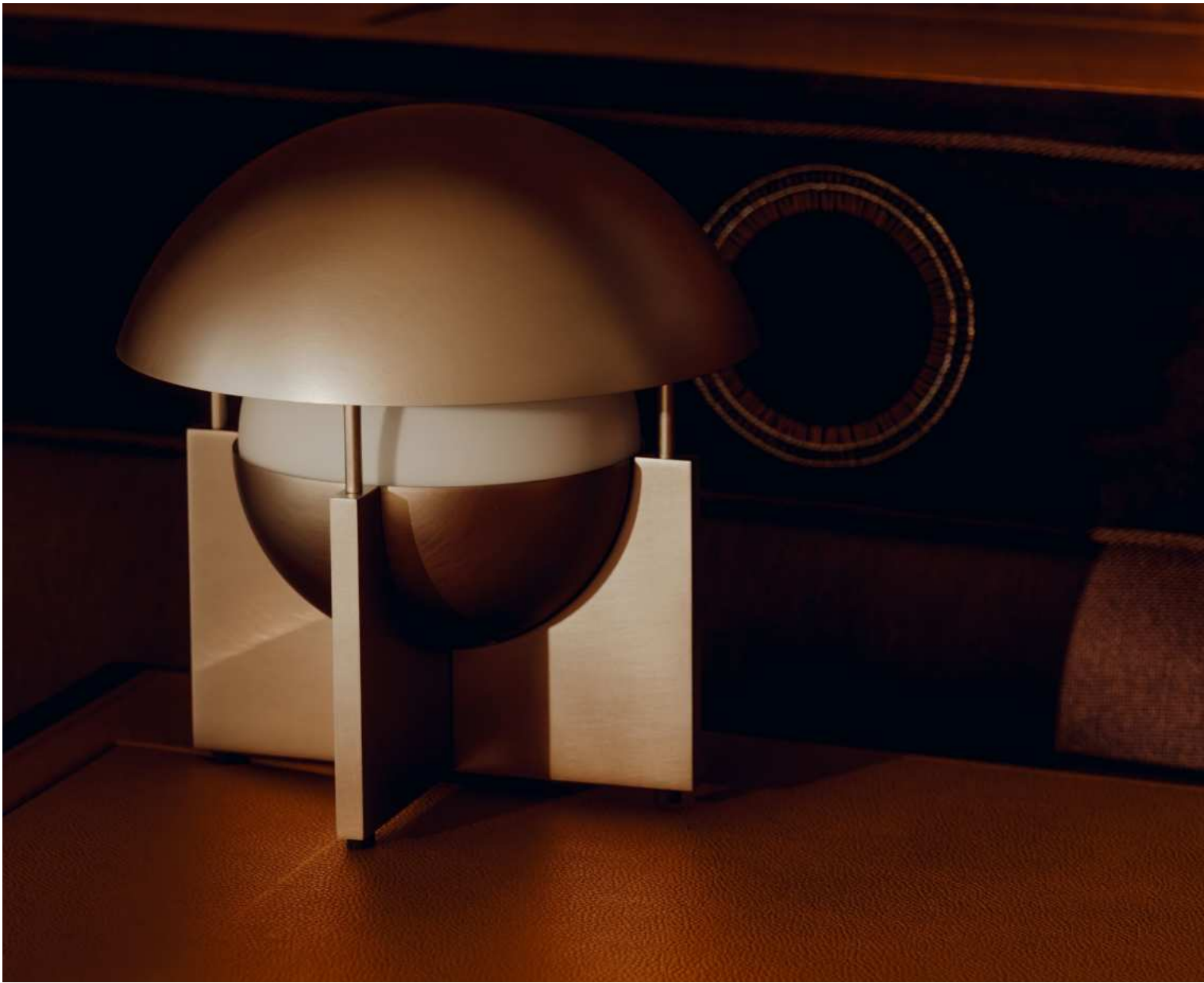
# AESTHETIC SURPRISE

A CELEBRATION OF FRENCH CRAFTSMANSHIP AND GLOBAL CULTURE

Aboard the Corinthian, every element tells a story. Designed to be a floating masterpiece, the yacht blends the finest French craftsmanship with influences from the world’s most inspiring cultures. From intricate glasswork to curated art collections, each corner invites discovery. Step into a world where luxury transcends expectations, where every design choice is a testament to the art of living beautifully. Whether it’s the soft glow of vintage-inspired lighting or the tactile elegance of handcrafted materials, the Corinthian transforms each moment into an aesthetic celebration. The yacht’s interiors and exteriors are designed to surprise and delight, providing an ever-changing landscape of beauty and elegance. Guests are invited to discover spaces that evoke emotion and spark imagination, from the timeless artistry of its furnishings to the carefully curated cultural elements inspired by global influences. The Corinthian offers an unparalleled opportunity to journey through both the physical and artistic world in style and comfort.



Suite Panoramique



Original design for the vessel lamps by Maxime d'Angeac



# YOUR JOURNEY





ORIENT EXPRESS

# A WONDER LIKE NO OTHER





THE ORIENT EXPRESS PHILOSOPHY

# THE SPEED OF ICONS

The Orient Express philosophy redefines slow travel, inviting guests to savor each moment as landscapes unfold like a painter’s canvas. Onboard the Corinthian, luxury is measured not in haste but in harmony. Each rhythm—the soft whisper of sails, the gentle sway of the sea—encourages reflection and connection. With every port of call, you’ll uncover the timeless allure of destinations steeped in history and culture, all at a pace that allows you to truly immerse yourself in the journey.

Every voyage aboard the Corinthian is a celebration of the journey itself, where time becomes a cherished companion rather than a constraint. Guests are encouraged to linger in the beauty of each destination, to relish the quiet moments between adventures, and to let the yacht’s elegant surroundings become a sanctuary of peace and inspiration. This approach transforms travel into an art form, where every detail contributes to an experience of profound luxury and serenity.





EXPERIENCING UNIQUENESS

# FOR THE SOPHISTICATED ADVENTURER



For those who seek not just to travel, but to explore, the Corinthian is a gateway to unparalleled adventures. Each journey offers a unique tapestry of destinations, blending iconic landmarks with hidden gems. From sunrise yoga on the deck to candlelit dinners ashore, your journey is a meditative dance between discovery and indulgence. This is not merely a voyage—it's a call to experience the extraordinary, crafted exclusively for those who revel in the art of exploration.

With a carefully curated itinerary, the Corinthian ensures that every stop becomes a memory to treasure. Guests can immerse themselves in the culture and history of intimate shores while enjoying the comforts of a luxurious retreat. Whether it's engaging in thrilling activities, savoring local delicacies, or simply basking in the serene beauty of the Mediterranean, this journey is designed for those who crave meaningful connections and unique experiences.



# ONBOARD EXPERIENCE





# YOUR JOURNEY INCLUDES

PART OF ALL INCLUSIVE FARE

- ◆ **OVERALL**  
Legendary Orient Express Service Excellence
- ◆ **ACCOMMODATIONS**  
All-Suite Staterooms With Butler Service  
Laundry Service  
Bespoke Amenities  
Jacuzzis / Sunbeds (in some suites)
- ◆ **CULINARY**  
Multiple Restaurants, Bars And Lounges  
Fine Wines, Spirits & Beverages  
In-Suite Dining
- ◆ **ENTERTAINMENT**  
Live Music  
Amphitheater Cabaret  
Recording Studio  
Cinema  
Game Room And Library  
Marina Platform With Water Toys  
Nautical Instruction  
Tailoring
- ◆ **EXPERIENCES**  
Exclusive Destination Experiences  
(Included in each itinerary)





# CULINARY JOURNEY

BY YANNICK ALLÉNO

- ◆ LA TABLE DE L'ORIENT EXPRESS
- ◆ LA TERRASSE
- ◆ LA PERLE
- ◆ L'ÉCRIN
- ◆ LE CELLIER
- ◆ IN-SUITE DINING



Dining aboard the Corinthian is a celebration of the senses, curated by the visionary, multi-starred Michelin chef, Yannick Alléno. From the rich, layered flavors of his signature sauces to innovative interpretations of classic dishes, each meal is an artistic creation. Guests can indulge in culinary delights at La Table de l'Orient Express by Yannick Alléno, where the ambiance—enhanced by stunning glasswork and soaring ceilings—elevates every bite. Whether enjoying delectable seafood and wine pairings in L'Ecrin, or the innovative dishes in La Terrasse, each dining venue promises an unforgettable experience that redefines luxury dining at sea. The culinary program aboard the Corinthian is as diverse as it is exquisite, offering an array of options to satisfy every palate. With multiple restaurants, bars, and lounges, guests can embark on a gastronomic adventure that spans the globe while enjoying the finest ingredients and techniques. From casual poolside snacks to intimate fine dining experiences, every meal is a celebration of creativity and passion, ensuring that dining becomes one of the highlights of the journey.



The panoramic view of La Table de L'Orient Express



# LA TABLE DE L'ORIENT EXPRESS

BY YANNICK ALLÉNO

The acclaimed, multi-michelin-starred French chef Yannick Alléno is known for crafting sauces with the artistry of a master perfumer. Under the direction of his executive chef, the restaurant's team will execute a menu designed to showcase his culinary vision. Set in a stunning dining room with soaring six-meter ceilings and exquisite glasswork by Emmanuel Barrois, the ambiance is designed to intensify every flavor on your plate. In the words of Chef Alléno, "expect to leave with a truly memorable impression."







La Table de l'Orient Express by Yannick Alléno





LA TERRASSE

Inspired by the grand ocean liners, this restaurant offers a refined dining experience. From the bar, take the majestic double staircase to the main dining room, where subtle Art Deco touches blend with contemporary design, giving the space an exquisite, timeless ambiance.

Here, whatever you choose to dine on, the experience promises to delight all the senses.



LA PERLE

Whether to savor dishes from our gourmet dining restaurants or to discover meticulously crafted menu tailored to guest preferences, this intimate dining venue with just one table offers guests to explore the nuances of flavor.



LE CELLIER

Aromas, tannins, vintages, grands crus... Wine and tea have much more in common than vocabulary. Step into this exclusive space, where a glass-encased wine cellar filled with exceptional vintages mirrors a curated tea counter, creating a refined harmony of both worlds.

This intimate dining venue—exclusively available for private reservations with just two tables—also hosts workshops, inviting guests to deepen their appreciation and expertise in the fine art of tasting both wine and tea.



L'ÉCRIN

Inspired by the art of fusion—blending, combining, and reimagining flavors—this space at the Corinthian brings together global influences to create unforgettable culinary journeys, highlighting the freshest shellfish, fish, and treasures of the sea.

Only in the evening guests are invited to explore these new culinary horizons against a backdrop of stunning ocean views.



# BARS & LOUNGES

- ◆ LE FLYBRIDGE
- ◆ LE YACHT CLUB
- ◆ LA PISCINE
- ◆ LE WAGON BAR
- ◆ LE SPEAKEASY
- ◆ MARINA BAR
- ◆ LE BAR DE LA BIBLIOTHÈQUE
- ◆ L'ENCRE

Aboard the Corinthian, every bar and lounge is a destination in itself, designed to complement your journey. From Le Speakeasy’s laid back elegance to the vibrant energy of Le Yacht Club, each space offers a unique ambiance. Guests can unwind with a cocktail at La Piscine, savor champagne at the Marina Bar with stunning sea views, or enjoy live music and camaraderie at Le Wagon Bar. These meticulously curated spaces blend sophistication with warmth, inviting moments of connection, celebration, and serenity as the waves gently lap against the hull.

Each bar and lounge is an experience to be savored, offering bespoke cocktails, fine wines, and a carefully selected menu of snacks and light meals. The variety of atmospheres ensures that every mood is catered to, from quiet reflection to lively gatherings. Whether it’s sipping a vintage cognac under the stars or sharing stories over a signature cocktail, the bars and lounges aboard the Corinthian provide the perfect setting to enhance your journey and create lasting memories.



Le Speakeasy



Le Speakeasy



La Piscine







BAR & LOUNGES EXPERIENCE

# MARINA BAR

Just a short distance from the remarkable Marina, dedicated to water and board sports, this bar is the ideal spot –whether for unwinding after an activity or simply enjoying its breathtaking proximity to the sea. A few steps lead you to tables that seem to float over the water when the deck unfolds at anchor... simply magical.







FRESH SEA FOOD FLAVORS

# L'ENCRE

Whether you arrive alone, with a companion, or in a group, L'Encre awaits. Drop in spontaneously or with a plan, but always with the irresistible urge—whether sudden or long-held—to savor the finest seafood, paired with a glass of white wine or a flute of champagne. Around a light-filled counter, enjoy this culinary escape.







ALL DAY-BAR

# LA PISCINE

At any time of day, stop by for a drink or a sweet or savory snack. And at tea time, enjoy a scone as in London, a classic Parisian flan, or an Orient Express hazelnut treat. Relax in the bar's plush seating and admire the elegant 1930s-inspired double staircase leading up to the restaurant—transporting you from one paradise to another.





# ENTERTAINMENT

- ◆ LE CABARET
- ◆ LA SALLE DES CARTES
- ◆ LE CINÉMA
- ◆ LES MOUSSES
- ◆ LE SALON DE MUSIQUE
- ◆ LA MARINA
- ◆ LA PISCINE
- ◆ LA BIBLIOTHÈQUE

La Bibliothèque



La Piscine

An amphitheatre that borrows its stage technology for sound and lighting from the Lido de Paris. An intimate cinema room that can be privatized to watch new films or great classics, comfortably seated in the original armchairs of the mythical Orient Express train.

An adults-only game room for playing chess, checkers, backgammon, video game, poker or blackjack. On family friendly sailings, a separate gaming area is available for our smaller sailors.

Unique: a recording studio equipped with drums, piano and guitars so that professionals and amateurs alike can play, alone or accompanied by musicians, practice, compose and even record themselves if they so wish.

A library of 1,500 books for travel and adventure lovers to choose from to relax and enjoy.

Unwind in our aft leisure pool, where you can soak in the stunning ocean views while enjoying a tranquil swim or a refreshing dip.

Just as there are a thousand and one ways to enjoy yourself, there are almost as many on the Corinthian.





NAUTICAL EXPERIENCE

# LA MARINA

Nestled at the stern, this Marina is discreet yet majestic, one of the largest ever constructed on a sailboat. When anchored, the Corinthian’s platform unfolds, gently settling onto the water, just a few inches above the surface. Under the guidance of skilled instructors, guests can enjoy a variety of water sports –windsurfing, kayaking, snorkeling, paddleboarding, wing foiling, tiwal sailing– or simply visit for the pleasure of unwinding at the Marina bar, overlooking the sea.





# WELL-BEING

- ◆ LE GYMNASE
- ◆ LE COULOIR DE NAGE
- ◆ LE SPA
- ◆ LE BARBIER & LE SALON DE BEAUTÉ
- ◆ LE TAILLEUR

La Piscine



Le Barbier

Travelling aboard the Corinthian means having the sea as your companion and an exceptional setting to take your time and have it all to yourself.

On board, whatever the time of day or your desires, you'll find living areas or spaces dedicated to pure relaxation and absolute well-being.

Experience the pinnacle of sophistication with Le Tailleur, an exclusive onboard service dedicated to impeccable style and personalization.

Enjoy the fitness or yoga rooms overlooking the sea or water sports by the Marina; take a moment of serenity at Le SPA with a unique treatment experience; Enjoy a refreshing swim or a leisurely float in our serene lap pool, perfect for relaxation and light exercise at sea.

Treat yourself to exceptional hair styling, cutting, and blow-dry services in Le Salon de Beauté.

Experience premier hair styling, cutting, beard grooming, and blow-dry services, all with a stunning sea view at Le Barbier.

So many unique and privileged moments to regenerate, recharge, reconnect... and feel the bliss of rediscovered well-being.



A PEACEFUL ESCAPE

# LE COULOIR DE NAGE

Set beneath the open sky, the lap pool offers a peaceful escape for both fitness and relaxation, where each stroke brings you closer to a sense of inner calm. With the expansive heavens above, it's an ideal space to center yourself, whether you're seeking a refreshing workout or a moment of quiet reflection.





Le SPA

« EACH TREATMENT IS A SENSORY JOURNEY WITHIN THE JOURNEY, BLENDING TRANQUILITY AND FULFILLMENT. »

The wellness experience aboard Orient Express Sailing Yachts offers unparalleled care at sea, where each journey becomes a path to transformation. Inspired by the spirit of travel, our wellness philosophy invites guests to reconnect with themselves through curated rituals designed to restore body and mind.

Le SPA, a true sanctuary of well-being spanning 500 m<sup>2</sup> (5,382 ft<sup>2</sup>), welcomes you into an atmosphere of serene tranquility from the moment you arrive. With two treatment rooms, a double suite, a gentle sauna, and a relaxation lounge, every element is crafted to embrace the art of disconnection and renewal. Each treatment is a sensory journey within the journey—merging stillness, personalization, and the healing power of touch. Expert practitioners deliver tailored rituals that harmonize body and soul, awakening a deeper sense of balance and peace.

Signature experiences inspired by the sea’s rhythms invite you to celebrate water in all its forms. With offerings such as “Aqua Odyssey,” each treatment evokes a voyage to pure serenity.

An enchanting escape where the poetry of travel graces each moment, Le SPA aboard the Corinthian transforms wellness into art—a true feast for the senses.



EXCEPTIONAL RELAXATION

# LE SPA





# SUITES



THE PENTHOUSE SUITES ON DECK 7 EMBODY THE ESSENCE OF ELEGANCE AND REFINED LUXURY ABOARD THE YACHT. THESE EXPANSIVE SUITES ARE THOUGHTFULLY DESIGNED TO PROVIDE A SERENE AND EXCLUSIVE RETREAT, WITH SOPHISTICATED DECOR AND BESPOKE DETAILS THAT CREATE A UNIQUE SENSE OF PLACE. EACH SUITE INVITES YOU TO RELAX IN SPACIOUS COMFORT, SURROUNDED BY CURATED PIECES THAT BLEND MODERN AESTHETICS WITH TIMELESS CHARM. FOR THOSE SEEKING AN EVEN MORE REMARKABLE EXPERIENCE, ALL SIX SUITES CAN BE SEAMLESSLY COMBINED TO FORM A PRIVATE DECK SPANNING OVER 10,000 SQUARE FEET (APPROXIMATELY 930 SQUARE METERS), OFFERING AN UNMATCHED SANCTUARY OF SPACE AND STYLE ON THE OPEN SEA.

# PENTHOUSE SUITES





# PENTHOUSE

SIX INCREDIBLE SUITES

Welcome to the pinnacle of luxury aboard the Corinthian—the Penthouse, a collection of six bespoke suites located on Deck 7. Individually remarkable and collectively awe-inspiring, these suites redefine grandeur, offering an unparalleled opportunity to curate your own private oasis at sea. With the option to combine all six suites into a single, expansive private deck, the Penthouse transforms into a sanctuary of sophistication, privacy, and indulgence, making it the ultimate choice for discerning travelers seeking an exclusive escape.

By reserving the entire Penthouse, you unlock a realm of tailored luxury, where every detail is customized to your desires. Available to accommodate up to 22 guests in all, the entire deck becomes your domain, complete with personalized service and amenities designed to elevate your journey. This is more than accommodation; it's a bespoke experience that transcends expectations.

SUITE SIZE

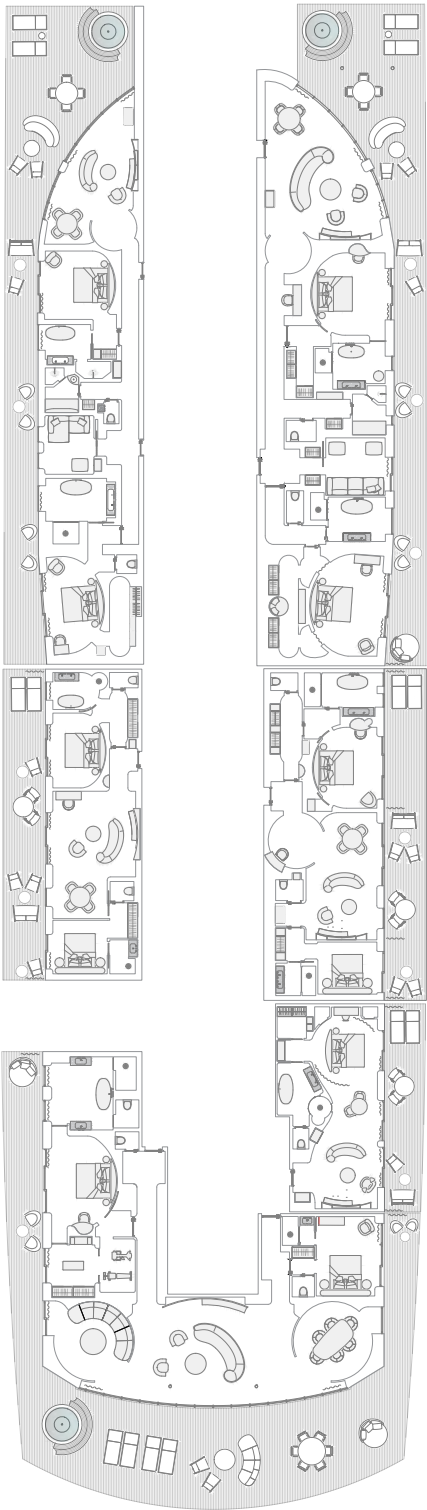
**9,989 ft<sup>2</sup>** (928 m<sup>2</sup>)

TERRACE SIZE

**5,674 ft<sup>2</sup>** (527 m<sup>2</sup>)

N° DECK

**7**





# AGATHA CHRISTIE

1 SUITE

2 BEDROOM SUITE

Step into the world of mystery and intrigue in the Agatha Christie Suite, the largest and most expansive two-bedroom suite aboard the Corinthian. Inspired by the legendary novelist and her connection to the iconic Orient Express, this suite immerses you in an atmosphere of sophistication and storytelling. Subtle design elements pay homage to the author’s genius, from rich textures reminiscent of the golden age of travel to literary-inspired artwork that evokes the charm of her era.

Perfectly positioned for breathtaking views, the suite offers an inviting lounge area, a plush king-size bed, a fitness room, an en-suite bath adorned with marble and artisanal finishes and a spacious private terrace with a jacuzzi and furniture. Whether you are a fan of her mysteries or simply appreciate refined luxury, the Agatha Christie Suite is a journey into elegance and imagination.



SUITE SIZE

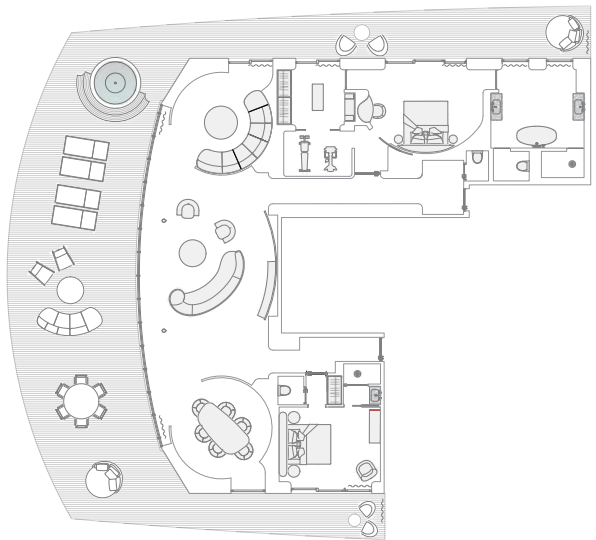
2,422 ft<sup>2</sup> (225 m<sup>2</sup>)

TERRACE SIZE

1,938 ft<sup>2</sup> (180 m<sup>2</sup>)

N° DECK

7







# ZEPHYR

2 BEDROOM SUITE

1 SUITE

The Zephyr Suite is an expansive two-bedroom retreat inspired by the gentle west wind, celebrated for its refreshing and rejuvenating nature. Designed for relaxation, the suite features soft, coastal hues, luxurious textiles, and bespoke artwork. Both bedrooms offer king-size beds, ensuring a perfect blend of comfort and elegance. A spacious private terrace with a jacuzzi allows you to bask in the sunlight or enjoy an evening under the stars, making every moment a memorable one. With its thoughtfully curated decor and tranquil ambiance, the Zephyr Suite is an ideal haven for unwinding and reconnecting with the beauty of the sea.

Adding a layer of timeless sophistication, a beautifully crafted Orient Express Heritage cabin within the suite pays homage to the legendary train's opulent design, evoking its rich legacy through intricate detailing and classic craftsmanship. With its thoughtfully curated decor and tranquil ambiance, the Zephyr Suite is an ideal haven for unwinding and reconnecting with the beauty of the sea.



SUITE SIZE

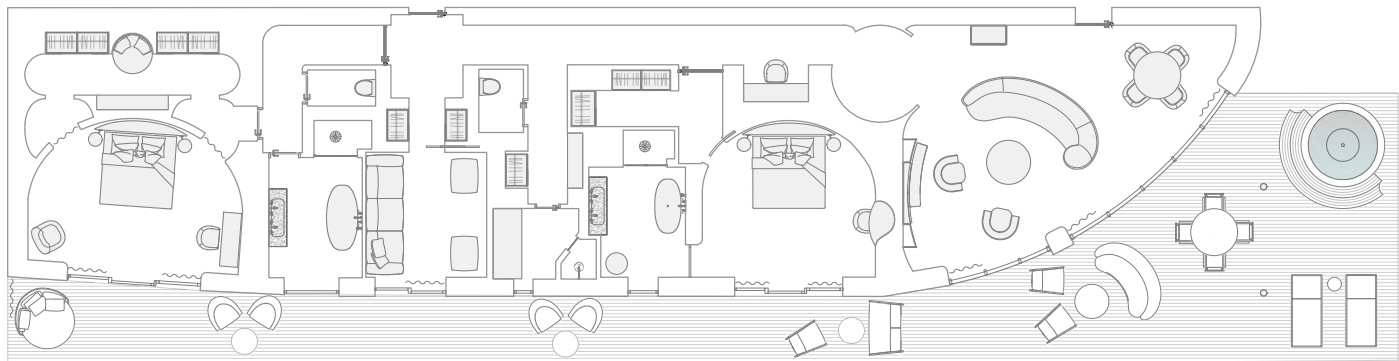
2,486 ft<sup>2</sup> (231 m<sup>2</sup>)

TERRACE SIZE

1,206 ft<sup>2</sup> (112 m<sup>2</sup>)

N° DECK

7





# MELTEM

2 BEDROOM SUITE

Named after the gentle summer winds of the Aegean, the Meltem Suite is an expansive two-bedroom sanctuary of serenity and flow. Sun-drenched interiors, airy design elements, and floor-to-ceiling windows immerse guests in a calming ambiance. Each of the two bedrooms features a plush king-size bed, offering ultimate comfort and privacy for families or groups.

The suite boasts a spacious living area and a private balcony, perfect for enjoying the sea breeze or a quiet moment under the stars. Carefully selected decor inspired by coastal beauty enhances the suite’s tranquil atmosphere, making the Meltem Suite a restorative retreat like no other.

Adding a touch of timeless sophistication, a carefully designed Orient Express Heritage cabin within the suite evokes the grandeur and tradition of the legendary train, seamlessly blending history with modern refinement.



SUITE SIZE

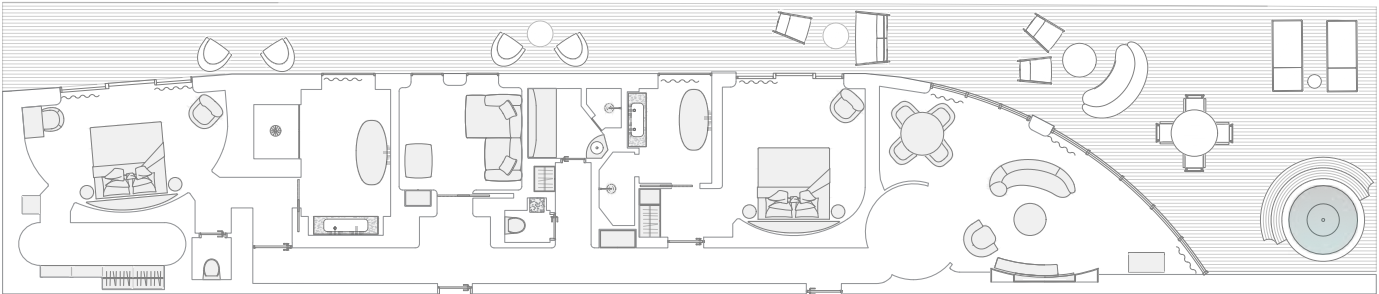
1,916 ft<sup>2</sup> (178 m<sup>2</sup>)

N° DECK

7

TERRACE SIZE

1,206 ft<sup>2</sup> (112 m<sup>2</sup>)







# LIBECCIO

2 BEDROOM SUITE

Named after the Mediterranean’s spirited southwest wind, the Libeccio Suite is an expansive two-bedroom haven that blends bold design with refined luxury. Vibrant accents, modern furnishings, and expansive windows create an environment that is both energizing and serene. Each bedroom features a king-size bed, offering the ultimate in relaxation and sophistication.

Enjoy uninterrupted views from your private balcony and unwind in a space that inspires and delights. With its dynamic design and luxurious amenities, the Libeccio Suite invites guests to experience the perfect balance of elegance and comfort.



SUITE SIZE

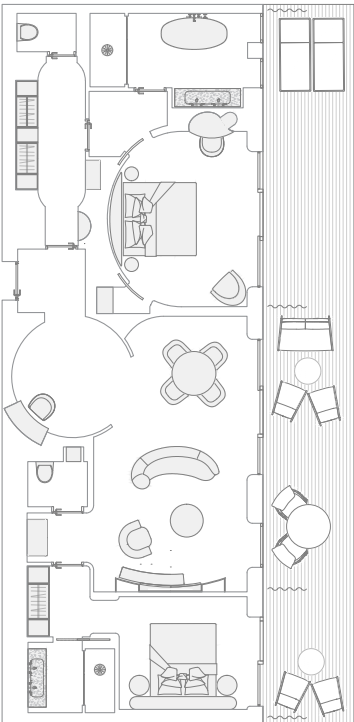
1,389 ft<sup>2</sup> (129 m<sup>2</sup>)

TERRACE SIZE

506 ft<sup>2</sup> (47 m<sup>2</sup>)

N° DECK

7







# SCIROCCO

2 BEDROOM SUITE

Inspired by the invigorating energy of the desert wind, the Scirocco Suite exudes contemporary elegance and refined luxury. This expansive two-bedroom suite offers ample space for relaxation and comfort, perfect for families or those seeking additional privacy. Sleek furnishings, soft lighting, and meticulously curated decor create a space that is both inviting and sophisticated.

The suite features a spacious lounge area, two plush bedrooms with king-size beds, and an elegant en-suite bathroom adorned with marble accents. A private balcony provides sweeping ocean views, offering the perfect setting to enjoy the gentle sea breeze. Every detail of the Scirocco Suite is designed to elevate your experience, making it a retreat of unparalleled sophistication at sea.



SUITE SIZE

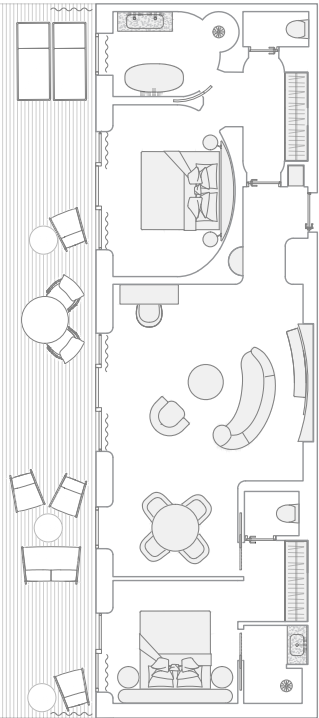
990 ft<sup>2</sup> (92 m<sup>2</sup>)

TERRACE SIZE

506 ft<sup>2</sup> (47 m<sup>2</sup>)

N° DECK

7







# MISTRAL

1 BEDROOM SUITE

1 SUITE

The Mistral Suite, inspired by the powerful northwesterly wind, offers a haven of understated elegance and luxurious comfort. This spacious suite is designed with relaxation in mind, featuring a sumptuous king-size bed that promises restful nights. A beautifully set table for two creates the perfect space for intimate in-room dining or enjoying a quiet breakfast while taking in the view.

Expansive ocean views flood the suite with natural light, complemented by sophisticated furnishings and thoughtful details that enhance the overall ambiance. With its blend of spaciousness, tranquility, and refined decor, the Mistral Suite provides a serene retreat, inviting guests to unwind and immerse themselves in the beauty of the open sea.



SUITE SIZE

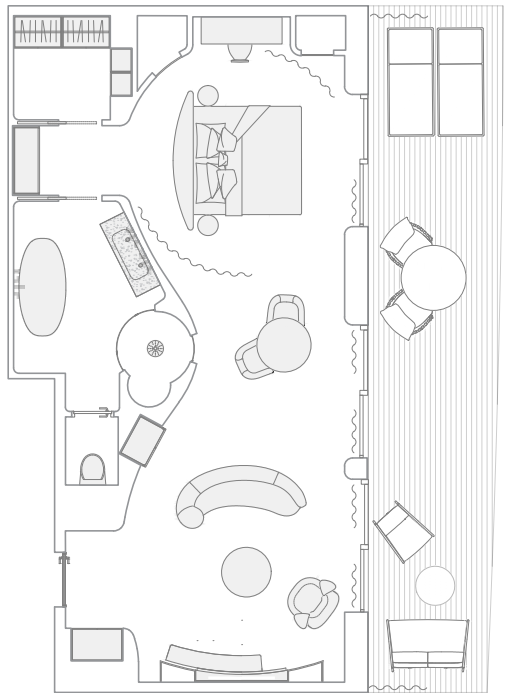
786 ft<sup>2</sup> (73 m<sup>2</sup>)

TERRACE SIZE

312 ft<sup>2</sup> (29 m<sup>2</sup>)

N° DECK

7







# CORINTHIAN SUITES

INSPIRED BY THE FRENCH RIVIERA, THE CORINTHIAN  
SUITES WILL WELCOME YOU IN AN INTEMPORAL  
ATMOSPHERE DESIGNED BY MAXIME D'ANGEAC.





# SUITE DUPLEX

TWO STORY SUITE

A sweeping staircase unites two distinct areas: one for daytime living, the other for restful nights. Between Decks 5 and 6, your suite unfolds over two spacious levels.

On the lower level, a grand bedroom awaits, complete with a marble bathroom featuring a soaking tub, double vanity, and, of course, a walk-in closet. Upstairs, an elegant double room houses a dining area across from a cozy lounge. Just beyond, a private terrace invites you to step outside.

Throughout both levels, the plush softness of expansive rugs with intricate patterns, rich mahogany tones, and deep, inviting armchairs create a seamless atmosphere of absolute space and comfort.



SUITE SIZE

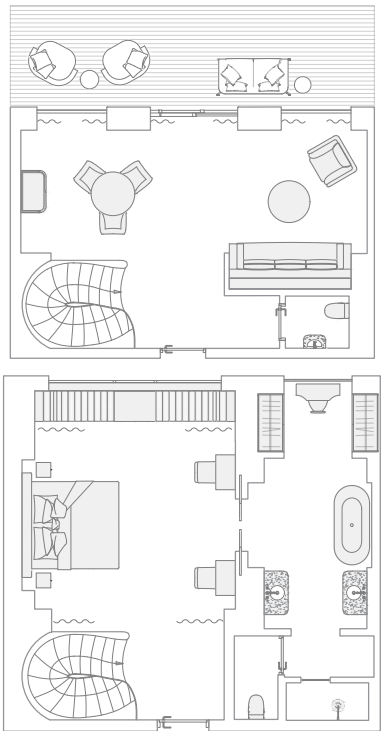
1,324 ft<sup>2</sup> (123 m<sup>2</sup>)

TERRACE SIZE

205 ft<sup>2</sup> (19 m<sup>2</sup>)

N° DECK

5/6







# APPARTEMENT PRESTIGE

4 SUITES

1 BEDROOM SUITE

A spacious bedroom and an equally large living room, separated by a privacy door, both open onto an expansive terrace complete with chaise lounge and seating area. The private dining area seats four for lunch or dinner, while the marble-clad bathroom, flooded with natural light, offers a double vanity and a soaking tub. And, of course, a walk-in closet is nearby.

Modern comforts abound, but it's in the fine details—the softness of a throw, the trim of a rug, the graceful curve of a sofa, the deep comfort of armchairs, the understated elegance of lighting, and the rich mahogany floors—that the suite's refined and intimate ambiance, inspired by the Orient Express, truly comes alive.



SUITE SIZE

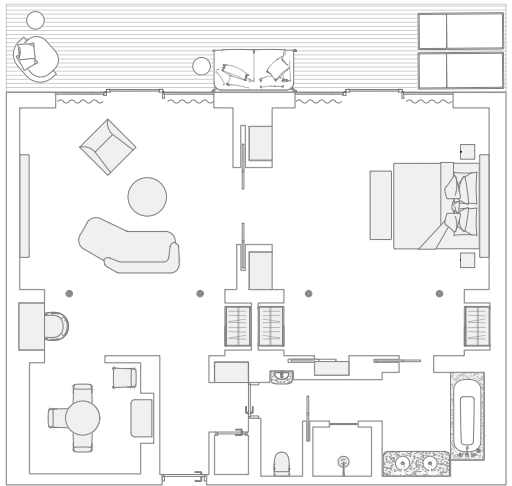
1,119 ft<sup>2</sup> (104 m<sup>2</sup>)

TERRACE SIZE

269 ft<sup>2</sup> (25 m<sup>2</sup>)

N° DECK

5/6





# APPARTEMENT SUPÉRIEUR

4 SUITES

1 BEDROOM SUITE

A spacious bedroom is matched by an equally expansive living room, ideal for hosting guests over drinks. Both rooms open onto a broad terrace, flooding the space with radiant light from the sea, highlighting every meticulously crafted detail—glossy wood, textured rugs, and elegant lighting.

A private dining area allows for in-suite meals, while the marble bathroom, with its generous soaking tub, is perfect for relaxing after a day ashore. As night falls, the only question that remains is how best to dress for the evening ahead.



SUITE SIZE

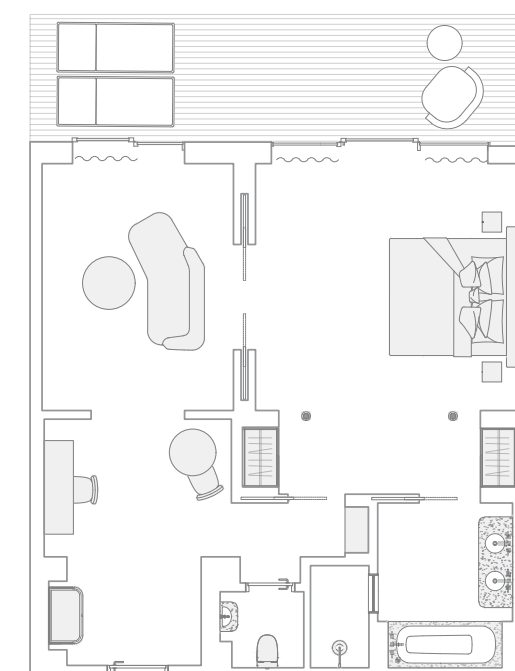
**840 ft<sup>2</sup>** (78 m<sup>2</sup>)

TERRACE SIZE

**269 ft<sup>2</sup>** (25 m<sup>2</sup>)

N° DECK

**5/6**







# APPARTEMENT

1 BEDROOM SUITE

The spacious bedroom and living room open onto a generous terrace, where sea light enhances polished wood, textured rugs, and soft lighting.

Enjoy meals in the private dining area, while the L-shaped layout is completed by a beautifully positioned bathroom behind the walk-in closet, lending the suite its unique name. As you prepare for the evening, the only question left is how to dress for the night ahead.



SUITE SIZE

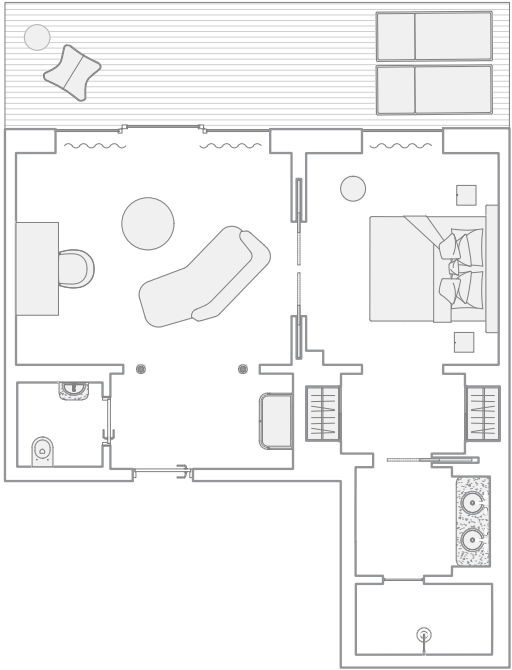
678–797 ft<sup>2</sup> (63–74m<sup>2</sup>)

TERRACE SIZE

161 ft<sup>2</sup> (15 m<sup>2</sup>)

N° DECK

5/6





# SUITE TERRASSE PRESTIGE

4 SUITES

1 BEDROOM SUITE

Truly grand in every sense, these suites on Decks 5 and 6 offer an elegant layout designed for absolute comfort.

A double sliding door separates the large bedroom from the living room, where a hidden television and mini-fridge ensure seamless style. Both rooms open onto a terrace featuring plush chaises and a private lounge area.

With a walk-in closet and a marble bathroom featuring a soaking tub and double vanity, guests can relax and enjoy their suite as a true home away from home.



SUITE SIZE

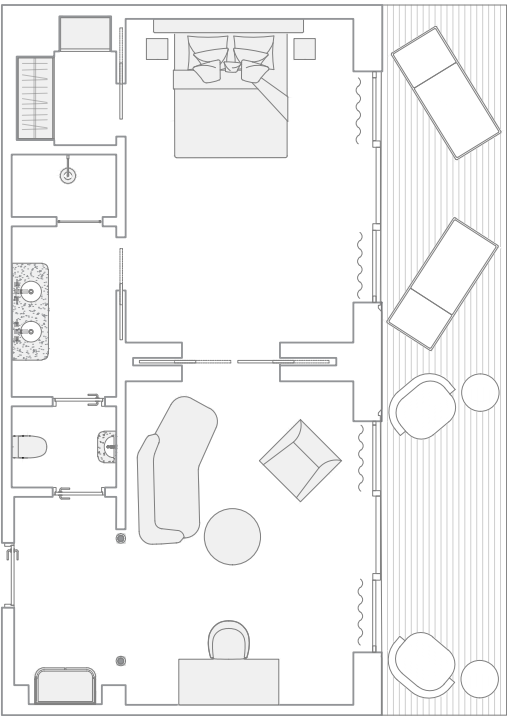
753 ft<sup>2</sup> (70 m<sup>2</sup>)

TERRACE SIZE

269 ft<sup>2</sup> (25 m<sup>2</sup>)

N° DECK

5/6







# SUITE TERRASSE

1 BEDROOM SUITE

Located at the bow of the ship on Deck 6, with high ceilings and a thoughtfully arranged layout, these suites reinterpret Art Deco with a Mediterranean flair, creating a true haven of tranquility.

In the main area, the bedroom and living space blend seamlessly, separated by a plush sofa and coffee table that allow both areas to coexist in perfect harmony, with abundant natural light filling the suite. The floor-to-ceiling terrace doors bring in the endless blue hues of sky and sea.

Step out onto the terrace, designed with teak-inspired flooring that's soft underfoot, and unwind on a chaise or one of the comfortable armchairs, accompanied only by the gentle sounds of wind and waves.



SUITE SIZE

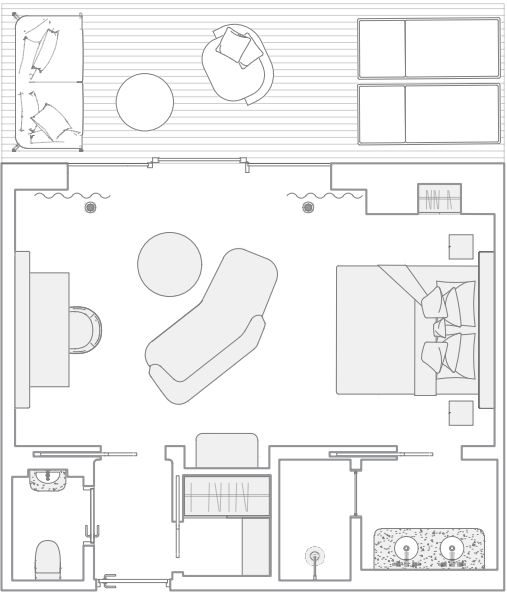
463 ft<sup>2</sup> (43 m<sup>2</sup>)

TERRACE SIZE

161 ft<sup>2</sup> (15 m<sup>2</sup>)

N° DECK

6





# SUITE PANORAMIQUE PRESTIGE

1 BEDROOM SUITE

From the moment you step inside, you’re embraced by a luxurious sense of space, comfort, and calm.

Velvet armchairs furnish a separate living area as spacious as the bedroom it adjoins, with sumptuous fabrics and fine woods enhancing the suite’s luxurious feel. The light marble bathroom draws inspiration from the Mediterranean ambiance of Villa Kérylos. Facing each other before a panoramic window, two chaises invite relaxation and endless ocean views. Nothing disturbs the suite’s graceful tranquility. Only the sea gently draws you in.

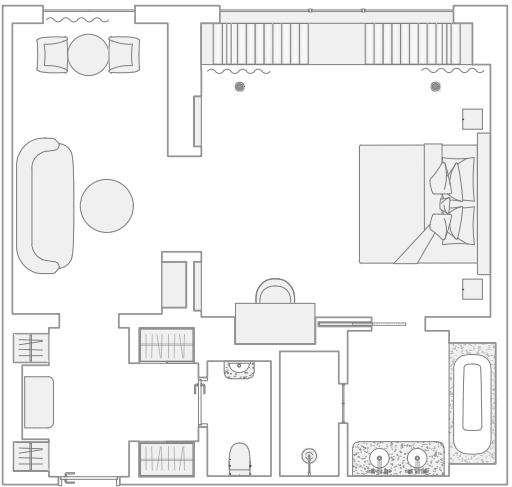


TOTAL SPACE

764 ft<sup>2</sup> (71 m<sup>2</sup>)

N° DECK

5





# SUITE PANORAMIQUE

1 BEDROOM SUITE

20 SUITES

More than a suite—this is a sanctuary at sea.

With soaring ceilings unlike anything seen on a vessel and an expansive bay window that bathes the space in natural light, the Suite Panoramique offers uninterrupted views of the horizon.

Designed for both elegance and tranquility, its refined blend of marble, rich woods, glass, and velvet creates an atmosphere of effortless sophistication. Stretch out by the grand bay window, book in hand, as the ocean peacefully passes by—an invitation to unwind and savor the journey.

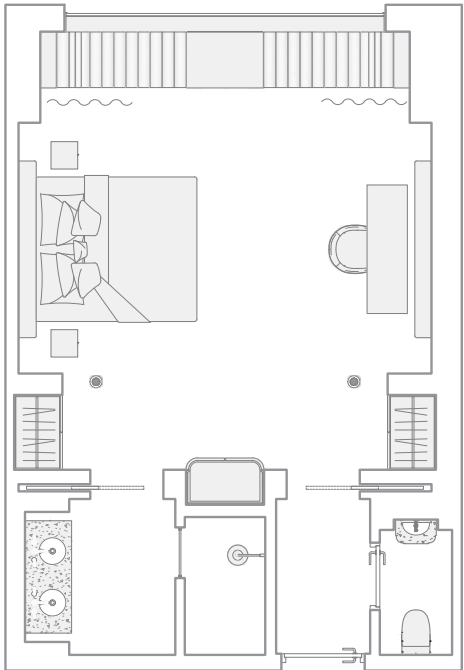


TOTAL SPACE

506 ft<sup>2</sup> (47 m<sup>2</sup>)

N° DECK

4/5





# ITINERARIES





ONLY THE SKY, THE SUN... AND THE

# MEDITERRANEAN

Its vibrant colors, breathtaking landscapes, stunning islands and beaches, charming cities and villages... The Mediterranean has inspired countless writers, painters, and poets—far too many to name.

The countries blessed to line its shores—Croatia, Spain, France, Italy, Malta, Morocco, Monaco, Montenegro, and Portugal—are part of our curated destinations. In each, you'll dock in their picturesque ports, immerse yourself in their rich history, and explore their most renowned monuments and architectural treasures. From iconic addresses to the most secret corners, every moment will offer something unique and unforgettable.

Just like the Mediterranean's endless horizon blending into the sky, our goal is to ensure your experience is truly unforgettable.



# THE CORINTHIAN DESTINATIONS





MEDITERRANEAN SEASON 2026

# VOYAGE CALENDAR

DATE	NIGHTS	ITINERARY
JUN 06-12	6	<b>PROVENCE &amp; FRENCH RIVIERA</b> Marseille, Cannes, Saint-Tropez, Marseille
JUN 06-10	4	<b>BEST OF FRENCH RIVIERA</b> Marseille, Cannes, Saint-Tropez
JUN 10-12	2	<b>PROVENCE</b> Saint-Tropez, Marseille
JUN 12-19	7	<b>CORSICA &amp; LIGURIA</b> Marseille, Propriano, Calvi, Saint-Florent, Lericì, Monte Carlo
JUN 19-27	8	<b>FRENCH RIVIERA &amp; PROVENCE</b> Monte Carlo, Cannes, Saint-Tropez, Saint-Cyr-sur-Mer, Marseille
JUN 19-23	4	<b>BEST OF FRENCH RIVIERA</b> Monte Carlo, Cannes, Saint-Tropez
JUN 23-27	4	<b>PROVENCE</b> Saint-Tropez, Saint-Cyr-sur-Mer, Marseille
JUN 27-JUL 04	7	<b>CORSICA &amp; LIGURIA</b> Marseille, Propriano, Calvi, Saint-Florent, Lericì, Monte Carlo
JUL 04-11	7	<b>ITALIAN RIVIERA</b> Monte Carlo, Portofino, Portoferrario, Porto Cervo, Monte Carlo
JUL 11-19	8	<b>FRENCH RIVIERA &amp; PROVENCE</b> Monte Carlo, Cannes, Saint-Tropez, Saint-Cyr-sur-Mer, Cassis, Marseille
JUL 11-15	4	<b>BEST OF FRENCH RIVIERA</b> Monte Carlo, Cannes, Saint-Tropez
JUL 15-19	4	<b>PROVENCE</b> Saint-Tropez, Saint-Cyr-sur-Mer, Cassis, Marseille
JUL 19-26	7	<b>CORSICA &amp; LIGURIA</b> Marseille, Propriano, Calvi, Saint-Florent, Lericì, Beaulieu-sur-Mer, Monte Carlo

JUL 26-AUG 03	8	<b>ITALIAN RIVIERA &amp; TYRRHENIAN ISLANDS</b> Monte Carlo, Portofino, Portoferrario, Porto-Vecchio, Porto Cervo, Civitavecchia
AUG 03-11	8	<b>AMALFI COAST &amp; SICILY</b> Civitavecchia, Naples, Capri, Amalfi, Giardini Naxos, Siracusa, Valetta
AUG 11-19	8	<b>TYRRHENIAN SEA</b> Valletta, Siracusa, Giardini Naxos, Capri, Porto Cervo, Valletta
AUG 19-26	7	<b>ADRIATIC COAST</b> Valletta, Otranto, Dubrovnik, Hvar, Rovinj, Venice
AUG 26-30	4	<b>VENICE FILM FESTIVAL</b>
AUG 30-SEP 03	4	<b>ADRIATIC GEMS</b> Venice, Rovinj, Brioni, Trieste, Venice
SEP 03-06	3	<b>VENICE FILM FESTIVAL</b>
SEP 06-13	7	<b>ADRIATIC COAST</b> Venice, Rovinj, Hvar, Dubrovnik, Montenegro, Otranto, Valletta
SEP 13-20	7	<b>TYRRHENIAN SEA</b> Valletta, Siracusa, Giardini Naxos, Capri, Porto Cervo, Marseille
SEP 20-23	3	<b>PROVENCE</b> Marseille, Cassis, Saint-Tropez, Monte Carlo
SEP 23-26	3	<b>MONACO YACHT SHOW</b> Monte Carlo (with sailing time)
SEP 26-30	4	<b>LES VOILES DE SAINT-TROPEZ</b> (with sailing time)
SEP 30-OCT 05	5	<b>LES VOILES DE SAINT-TROPEZ</b> Saint-Tropez, Marseille (with sailing time)
OCT 05-12	7	<b>IBERIC PENINSULA</b> Marseille, Roses, Mahón, Málaga, Cádiz, Portimão, Lisbon



# PROGRAM ASHORE





Le Palais Bulle, Cannes

A VOYAGE LIKE NO OTHER

# INCLUSIVE DESTINATION EXPERIENCES



Dinner at Peggy Guggenheim Collection, Venice



Dinner on Dubrovnik's City Wall

Every moment of your Corinthian's journey is designed to transform travel into a masterpiece, and our custom-designed destination experiences are no exception.

Exclusively crafted to immerse guests in the heart of each locale, these experiences are unparalleled in their creativity and accessibility. From breathtaking culinary adventures to intimate cultural encounters, no other voyage delivers the depth and authenticity of our itineraries. Best of all, these extraordinary moments are fully included as part of your voyage fare.

Each destination reveals its secrets in ways that only Orient Express can orchestrate. Imagine private tours of hidden landmarks, exclusive access to events in iconic settings, and immersive activities that bring local traditions to life. Whether you're savoring a candlelit dinner on a secluded Corsican beach, enjoying a truffle feast in the Provençal countryside, or witnessing the timeless art of flamenco under the stars, every experience is a testament to our dedication to excellence and originality.

## A MEDITERRANEAN MOSAIC

Every voyage aboard the Corinthian unveils a tapestry of Mediterranean wonders, where iconic destinations meet hidden gems. From the glamorous French Riviera to the timeless allure of Corsica and the vibrant cultures of Spain and Italy, each itinerary is a masterwork of discovery and luxury.

Our meticulously curated destination experiences blend cultural immersion with exclusive access. Guests can explore iconic locales through private tours, savor intimate dinners in extraordinary settings, and engage with local

artisans and chefs to uncover the region's essence. Every moment is designed to create meaningful connections to the places visited.

## UNPARALLELED CULINARY ADVENTURES

Culinary artistry is at the heart of our destination experiences. Picture dining under the stars on a pristine Corsican beach, where a constellation of candles illuminates the sand and the gentle waves create a symphony of serenity. Or savoring a truffle-infused feast in Saint-Tropez, after arriving in style in a vintage car, surrounded by the verdant Provençal landscape. From haute cuisine to local delicacies, each culinary moment captures the soul of the region. Whether in a historic Venetian villa or atop Dubrovnik's medieval walls, our culinary experiences blend gastronomy with breathtaking backdrops, leaving guests with memories to savor long after their journey ends.

## TRANSFORMATIVE CULTURAL IMMERSION

At the heart of every destination is a story waiting to be told. Guests can dive into the rich history of Corsica, exploring its UNESCO-listed natural reserves and charming coastal towns. In Dubrovnik, stroll along ancient walls as the golden sunset casts a magical glow, culminating in a lavish medieval dinner.

Uncover the secrets of Napoleon on Elba, relive the glamour of Studio 54 in Cannes, or dance to the rhythm of a live flamenco performance under the stars while sailing the Spanish coast. Each experience combines heritage, artistry, and authenticity to transport guests into the soul of each location.



EXCLUSIVE ONSHORE IMMERSIONS

# OPTIONAL EXPERIENCES

Château La Coste, Aix-en-Provence



Beyond our all-inclusive curated journeys, Orient Express Sailing Yachts offers a selection of intimate, optional onshore experiences designed for those seeking deeper immersion. These exclusive shore experiences—reserved for just a handful of guests—grant access to extraordinary destinations, from private art collections to behind-the-scenes encounters with master artisans. Whether it’s a sommelier-led wine tasting paired with regional delicacies, a guided adventure through hidden cultural gems, or a personalized water sports excursion, each experience is crafted to surprise and delight. Available for pre-booking and tailored to your interests, these limited-capacity adventures elevate your voyage, ensuring a rare and unforgettable perspective on every destination.

Planeta Vineyard, Sicily



CRAFTING YOUR DREAM JOURNEY

# CONCIERGERIE

The Orient Express Conciergerie is your gateway to a world of bespoke luxury, where every element of your journey is meticulously designed to reflect your desires.

From the moment you reserve your voyage, a dedicated concierge orchestrates every detail with precision and artistry, ensuring an experience that is as seamless as it is extraordinary. Whether arranging a private after-hours tour of a historic landmark, securing an invitation to an exclusive event, or fulfilling an unspoken wish before you even ask, our Conciergerie transforms the impossible into reality.

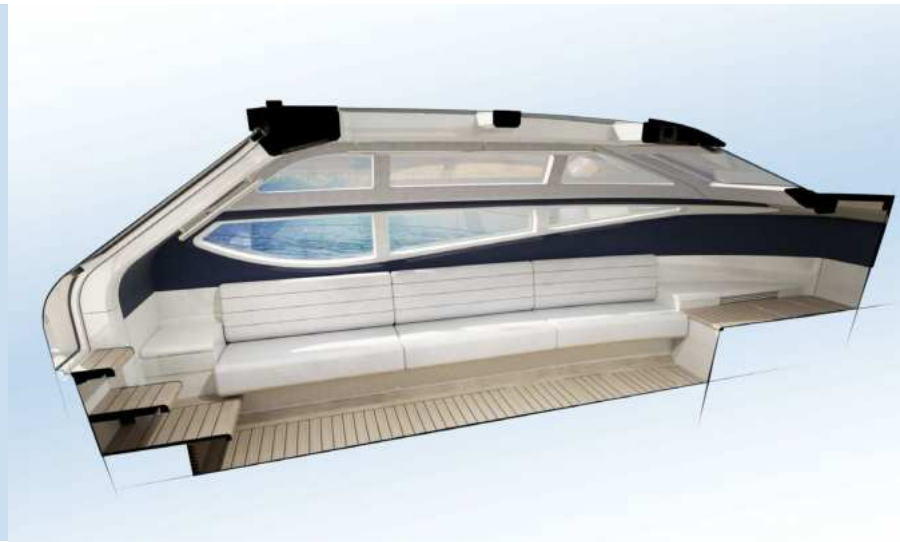
More than a service, the Conciergerie is an invitation to travel without limits—where rare cultural immersions, private yacht-to-shore experiences, and intimate celebrations are effortlessly brought to life. Every request is handled with an unwavering commitment to excellence, anticipating your every need and elevating your journey to a realm of unparalleled refinement. Whatever you dream, we make it happen, curating moments that transcend expectations and create memories to last a lifetime.



ARRIVING IN STYLE

# LIMOUSINE TENDERS

THE ULTIMATE SHORE EXPERIENCE.  
Seamlessly blending elegance with innovation, our luxury Pascoe limousine tenders ensure that every journey ashore is as refined as the voyage itself. Designed for both comfort and style, these exquisite tenders offer a whisper-quiet, smooth ride, allowing guests to arrive at their destination effortlessly. Whether gliding across serene waters at sunrise or making a grand entrance to an exclusive event, our tenders embody the sophistication and exclusivity that define the Orient Express Sailing Yachts experience. Featuring plush interiors, impeccable craftsmanship, and seamless boarding, every transfer becomes an extension of the yacht's unparalleled luxury.



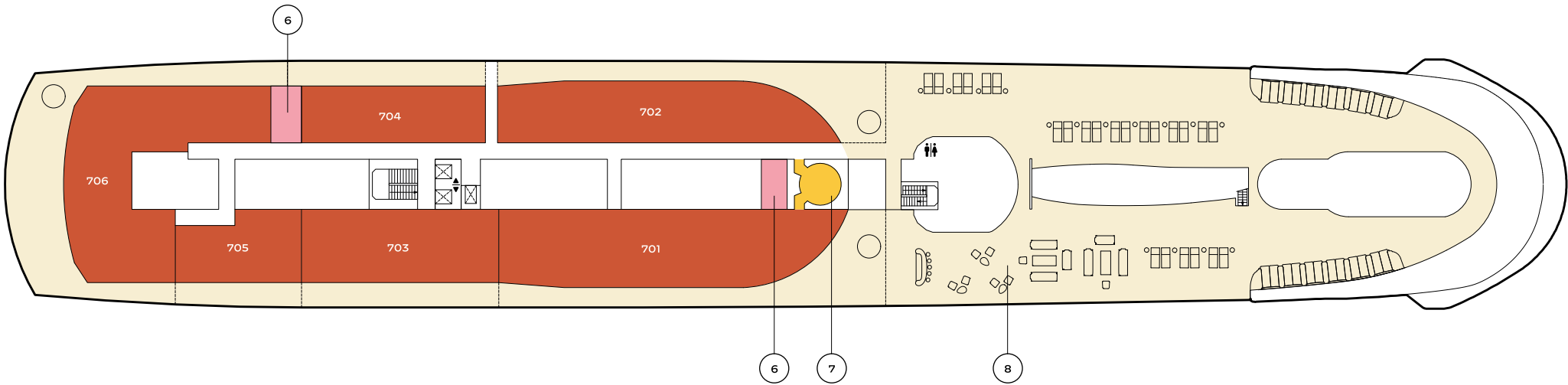


# DECK PLANS





DECK 7



- 706** SUITE AGATHA CHRISTIE

**705** SUITE MISTRAL

**704** SUITE SCIROCCO

**703** SUITE LIBECCIO

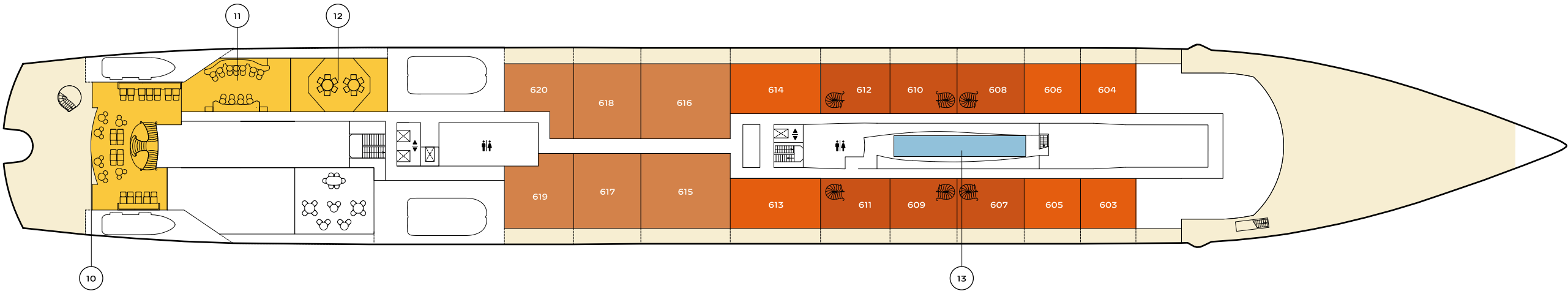
**702** SUITE MELTEM

**701** SUITE ZEPHYR
- 6** SERVICE CABIN

**7** LA PERLE

**8** LE FLYBRIDGE

DECK 6



- 603 – 606** TERRASSE SUITES

**607 – 612** DUPLEX SUITES

**613 – 614** TERRASSE PRESTIGE

**615 – 616** APPARTEMENT PRESTIGE

**617 – 618** APPARTEMENT SUPERIEUR

**619 – 620** APPARTEMENT
- 9** L'ÉTRAVE

**10** LA TERRASSE

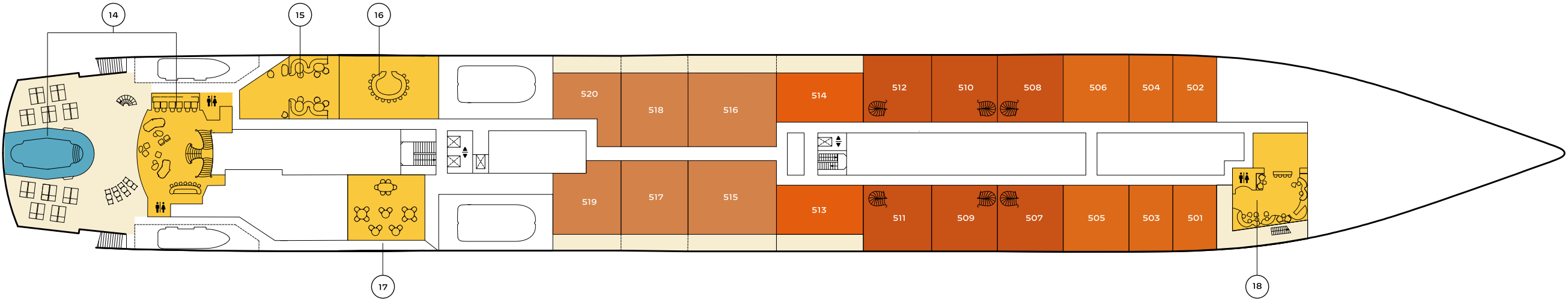
**11** L'ÉCRIN

**12** LE CELLIER

**13** LE COULOIR DE NAGE

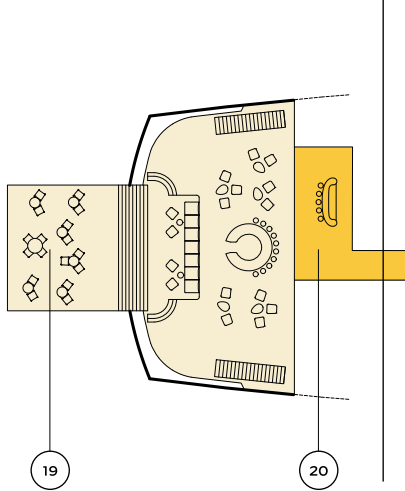


DECK 5



- 501 – 504** PANORAMIQUE SUITES  
**505 – 506** PANORAMIQUE PRESTIGE SUITES  
**507 – 512** DUPLEX SUITES  
**513 – 514** TERRASSE PRESTIGE SUITES  
**515 – 516** APPARTEMENT PRESTIGE SUITES  
**517 – 518** APPARTEMENT SUPERIEUR SUITES  
**519 – 520** APPARTEMENT SUITES
- 14** LA PISCINE  
**15** LE YACHT CLUB  
**16** L'ENCRE  
**17** LA TABLE DE L'ORIENT EXPRESS  
BY YANNICK ALLÉNO  
**18** LE WAGON BAR

DECK 3



DECK 4



- 401–416** PANORAMIQUE SUITES  
**19** LA MARINA  
**20** MARINA BAR  
**21** LE CABARET  
**22** LE SALON DE MUSIQUE  
**23** LE CINÉMA  
**24** LE LOBBY  
**25** LE BAR DE LA BIBLIOTHÈQUE  
**26** LA BIBLIOTHÈQUE
- 27** LE TAILLEUR  
**28** LE SALON DE BEAUTÉ  
**29** LE SPA  
**30** LE BARBIER  
**31** LE GYMNASE  
**32** LE SPEAKEASY  
**33** SPA TREATMENT ROOM  
**34** LA SALLE DES CARTES  
**35** LES MOUSSES









L'ORIENT EXPRESS

An icon of the Orient Express brand and a moving embassy of French luxury, the Orient Express Train revives its journey from Paris to Istanbul aboard 17 historic cars from the 1920s and 1930s—each a masterpiece of exceptional décor, faithful to the Art of Travel and the timeless art of tailoring.



La Dolce Vita Orient Express

ORIENT EXPRESS  
TRAINS

L'Orient Express



LA DOLCE VITA ORIENT EXPRESS

La Dolce Vita Orient Express is a promise. A dream of travel, an invitation to explore beauty through every sense. Aboard La Dolce Vita Orient Express, hedonistic travelers are invited to rediscover Italy's wonders in exquisitely restored carriages and sleeper cars, reimagined by Dimorestudio at the height of sophistication. Eight extraordinary journeys, like moving tableaux, reveal Italy's extraordinary cultural and historical richness, past and present.







Orient Express La Minerva

ORIENT EXPRESS LA MINERVA

Timeless grandeur meets an unparalleled location in the heart of Rome, where history and mystery intertwine. It was on this very square that, at the dawn of our era, Pompey erected a temple to Minerva, goddess of wisdom and the arts. Her statue was the muse behind artist-architect Hugo Toro's masterful restoration, striking a perfect balance between historical grandeur and contemporary refinement.

Built in 1620 as the residence of the noble Fonseca family, the Palazzo has been a hospitality icon since 1832. Today known as Orient Express La Minerva, the hotel has entered a new Renaissance, its soul preserved, its legacy elevated, offering an experience as exclusive as it is unforgettable.



ORIENT EXPRESS  
HOTELS



ORIENT EXPRESS PALAZZO DONÀ GIOVANNELLI

Built in 1436 by architect Filippo Calendario, also the maestro behind the Doge's Palace, Orient Express Palazzo Donà Giovannelli occupies a privileged position at the confluence of two canals, in the heart of Cannaregio, the only Venetian district where the soul of La Serenissima remains untouched. Architect and designer Aline Asmar d'Amman has orchestrated a meticulous and masterful restoration, where theatrical grandeur meets luminous poetry. Across 47 rooms and suites, past and present converse in an enchanting, seamless dialogue.



Orient Express Palazzo Donà Giovannelli



Your journey begins here. Whether you seek personalized travel advice, have a special request, or simply wish to learn more about our voyages, we are at your service. Speak to your Travel Advisor or our dedicated team, and allow us to curate your next unforgettable adventure.

For more information on Orient Express Sailing Yachts, please visit us online at:  
[sailing-yachts.orient-express.com](https://sailing-yachts.orient-express.com)

The Americas: +1 888-595-0930  
France: +33 187213450  
Worldwide: +44 2081639430  
Or your Travel Advisor

CREDITS

Creative Direction :  
Maxime d’Angeac

Graphic Design :  
Frontline Studio

Photography & Imagery :  
Maxime d’Angeac Architecture & Martin Darzacq | Luxigon | Chloé Blaix

Ship’s Name: OE Corinthian  
Ship’s Registry: Saint-Tropez

All information, including suite configuration, floor plans, and features depicted in artistic renderings are for illustrative purposes only and subject to change without notice. Please note that our published itineraries for ports of call, marina day operations, and beach day operations may change for safety, regulatory or other operational reasons at the discretion of the captain.

©2025 Orient Express. All rights reserved









